



Ralf-Dietrich Kahlke (Ed.)

# The Pleistocene of Untermassfeld near Meiningen (Thüringen, Germany)

Part 4

SENCKENBERG

Römisch-Germanisches  
Zentrum  
Leibniz-Forschungsinstitut  
für Archäologie

R G Z M



Römisch-Germanisches Zentralmuseum  
Leibniz-Forschungsinstitut für Archäologie  
und  
Senckenberg  
Research Station of Quaternary Palaeontology Weimar

**OFFPRINT**

**MONOGRAPHIEN DES RGZM Band 40, 4**

Ralf-Dietrich Kahlke (Ed.)

**THE PLEISTOCENE OF UNTERMASFELD  
NEAR MEININGEN (THÜRINGEN, GERMANY)**

**PART 4**

Mit Beiträgen von

Mark Benecke · Madelaine Böhme · Nicolas Boulbes · Marzia Breda  
Maia Bukhsianidze · Véra Eisenmann · Andreas Gärtner · Axel Gerdes  
Ralf-Dietrich Kahlke · John-Albrecht Keiler · Jonas Keiler · Uwe Kierdorf  
Adam Kotowski · Ulf Linnemann · Adrian M. Lister · Albrecht Manegold  
Krzysztof Stefaniak

Römisch-Germanisches  
Zentralmuseum  
Leibniz-Forschungsinstitut  
für Archäologie

**R | G | Z | M**

**SENCKENBERG**  
Leibniz Institution for Biodiversity and Earth System Research

Redaktion: Bärbel Fiedler | Senckenberg Research Station of  
Quaternary Palaeontology Weimar  
Bildbearbeitung: Evelin Haase | Senckenberg Research Station of  
Quaternary Palaeontology Weimar  
Umschlaggestaltung: Evelin Haase | Senckenberg Research Station of  
Quaternary Palaeontology Weimar – Skull of an approximately two-  
year-old *Eucladoceros giulii* (1/3 natural size) from Untermassfeld and  
detail of the excavated area (1979–2015 field seasons)

#### **Bibliografische Information der Deutschen Nationalbibliothek**

Die Deutsche Nationalbibliothek verzeichnet diese Publikation in  
der Deutschen Nationalbibliografie; detaillierte bibliografische  
Daten sind im Internet über <http://dnb.d-nb.de> abrufbar.

**ISBN 978-3-88467-324-9**  
**ISSN 0171-1474**

© 2020 Verlag des Römisch-Germanischen Zentralmuseums

Das Werk ist urheberrechtlich geschützt. Die dadurch begründeten  
Rechte, insbesondere die der Übersetzung, des Nachdrucks, der  
Entnahme von Abbildungen, der Funk- und Fernsehsendung, der  
Wiedergabe auf fotomechanischem (Fotokopie, Mikrokopie) oder  
ähnlichem Wege und der Speicherung in Datenverarbeitungs-  
anlagen, Ton- und Bildträgern bleiben, auch bei nur auszugsweiser  
Verwertung, vorbehalten. Die Vergütungsansprüche des  
§ 54, Abs. 2, UrhG. werden durch die Verwertungsgesellschaft  
Wort wahrgenommen.

Druck: johnen-druck GmbH & Co. KG, Bernkastel-Kues  
Printed in Germany.

# CONTENTS

<i>Sabine Gaudzinski-Windheuser</i> Foreword .....	IX
<i>Ralf-Dietrich Kahlke</i> Preface .....	XI
<i>Ralf-Dietrich Kahlke</i> Excavation progress and research at the Early Pleistocene site of Untermassfeld during the years 1997–2015 .....	1031
<i>Ralf-Dietrich Kahlke · Ulf Linnemann · Andreas Gärtner</i> New results on the origin and geological history of the Early Pleistocene site of Untermassfeld .....	1079
<i>Axel Gerdes · Andreas Gärtner · Ulf Linnemann · Ralf-Dietrich Kahlke</i> In situ U-Pb geochronology of re-deposited travertine from the Early Pleistocene site of Untermassfeld .....	1105
<i>John-Albrecht Keiler · Mark Benecke · Jonas Keiler</i> Bone modifications by insects from the Early Pleistocene site of Untermassfeld .....	1117
<i>Madelaine Böhme</i> New results on fishes from the Early Pleistocene site of Untermassfeld .....	1133
<i>Madelaine Böhme</i> New results on amphibians and reptiles from the Early Pleistocene site of Untermassfeld – Bioclimatic analysis of the herpetofauna .....	1141
<i>Albrecht Manegold</i> New results on birds from the Early Pleistocene site of Untermassfeld .....	1159
<i>Maia Bukhsianidze</i> New results on bovids from the Early Pleistocene site of Untermassfeld .....	1169
<i>Marzia Breda · Ralf-Dietrich Kahlke · Adrian M. Lister</i> New results on cervids from the Early Pleistocene site of Untermassfeld .....	1197
<i>Uwe Kierdorf · Ralf-Dietrich Kahlke</i> Pathological findings on remains of hippopotamids from the Early Pleistocene site of Untermassfeld .....	1251

*Adam Kotowski · Krzysztof Stefaniak · Ralf-Dietrich Kahlke*  
A rhinocerotid skull from the Early Pleistocene site of Untermassfeld ..... 1273

*Véra Eisenmann · Nicolas Boulbes*  
New results on equids from the Early Pleistocene site of Untermassfeld ..... 1295

List of contributors ..... 1323

Foldout I

*Dedicated to our esteemed colleague and friend of many years*

***Helmut Hemmer***

*on the occasion of his 80<sup>th</sup> birthday.*





# FOREWORD

## **Untermassfeld – A scientific treasure trove for generations to come**

As archaeologists we want to comprehend how we became human and to do so, we must look back at the beginning of our species, to understand the ecological niche hominins occupied when they first entered Europe, the niche that formed them and that they in turn influenced. We need contexts that enable us to evaluate the environment encountered by these hominin ancestors.

For these discussions, the site of Untermassfeld is key. Untermassfeld represents a unique archive that offers a wealth of data for the reconstruction of past habitats and landscapes before hominins arrived in Europe. For us, as archaeologists, it provides specific insights into predator-prey relationships that help us to evaluate hominins' position in the food web. With the preservation of a wide variety of remains of a biocoenosis that had fallen victim to a catastrophic flooding episode around one million years ago, Untermassfeld allows the reconstruction of such a food web into which hominins were later to intrude.

Against this background it is astonishing that Untermassfeld still awaits discovery as a crucial source for model building concerning early hominins in archaeology and palaeoanthropology and this is exactly where the Römisch-Germanisches Zentralmuseum, Leibniz-Research Institute for Archaeology (RGZM) comes in. Untermassfeld is a purely palaeontological record; hominins are not a variable at the site. So how is it that already during the 1990s the RGZM Publishing House invested in ensuring the publication of the first three principal volumes about the site (Kahlke 1997a; 2001a; 2001b)? The answer is easy: during our excavations at the beginning of the 1990s at the 1.8 Mio year old Georgian site of Dmanisi, a site that up till now still represents the earliest evidence for hominins outside of Africa, we together with our Georgian colleagues unearthed a well preserved thanatocoenosis including hominin fossils. With its scarcity of lithic tools and lack of evidence for active hominin interaction with the fauna these discoveries illustrated once more hominin interlacement in past habitats and it became apparent once again that we must make an effort to understand these habitats as prerequisite for the evaluation of the role hominins played in them. This was the context for the publication of the first Untermassfeld volumes and we are proud that with the publication of the current volume on Untermassfeld, we could once more contribute to this decade-long achievement, the results of which will remain a treasure trove for generations to come.

Having said all this, the potential of Untermassfeld to benefit archaeological research has not yet been exhausted. Untermassfeld helps us to understand the taphonomic chain of bone loss at both archaeological and palaeontological sites. In unique case studies, data on modification by hyenas (in volume 5), micro-mammals (Maul 2001), herbivores (Kahlke 2001c) as well as insects (Keiler et al. in this volume) enable the qualitative and quantitative assessment of these biotic agents in a given biocoenosis/thanatocoenosis. Pre- and postburial mechanisms and their consequences for the fossil record can be studied meticulously in settings known in detail and difficult to replicate in controlled experimental setups (Kahlke 1997b). Moreover, Untermassfeld allows an evaluation and interpretation of age profiles used in the zooarchaeological methodological apparatus (Kahlke and Gaudzinski 2005), to mention just a few relevant studies.

Recent publications since 2013 (Garcia et al. 2013; Landeck and Garcia Garriga 2016; 2017) have claimed that Untermassfeld provides the earliest evidence for human occupation of Europe. Particular controversy arose when Landeck and Garcia Garriga (2016) published supposedly anthropogenic cut-marked animal bones, on a sample that proved to be fraudulent (Callaway 2017; Roebroeks et al. 2018). This notorious case had juridical consequences for the first author of the paper, and editors of the journals in which the

authors had published about Untermassfeld later expressed their concerns, with consequences for the journals' policy on handling research data. If we review palaeontological and/or archaeological sites throughout human history, not many of them can claim to have been the subject of fraud, which perhaps illustrates perfectly that Untermassfeld is to be counted among the very few that »made it to the top«.

The picture I draw here is from a purely archaeological perspective, which should however not diminish the importance for palaeontology of this well-preserved and species-rich fossil deposit that was exhumed over 127 months of active field work to the exacting standards of archaeological excavation which now make the site so important for our understanding of taphonomic processes.

The Untermassfeld site will forever be linked to the name of Ralf-Dietrich Kahlke, whose unrelenting commitment and passion first helped to establish the scientific value of the site, and with whom we at MONREPOS are proud to collaborate since the 1990's. With this volume and volume 5 including the complete excavation plans, he brings the Untermassfeld project to its preliminary finish, although essential sites such as Untermassfeld will always remain at the focus of scientific interest.

## References

- Callaway, E., 2017. Archaeologists say human-evolution study used stolen bone. *Nature* 551, 279–280.
- Garcia, J., Landeck, G., Martínez, K., Carbonell, E., 2013. Hominin dispersals from the Jaramillo subchron in central and south-western Europe: Untermassfeld (Germany) and Vallparadís (Spain). *Quaternary International* 316, 73–93.
- Kahlke, R.-D. (Ed.), 1997a. Das Pleistozän von Untermaßfeld bei Meiningen (Thüringen). Teil 1. Monographien des Römisch-Germanischen Zentralmuseums 40, 1, I–VI, 1–418, pls. 1–67.
- 1997b. Bisheriger Gesamtbefund zur Geologie, Paläozoologie, Taphonomie, Ökologie und Stratigraphie der unterpleistozänen Komplexfundstelle Untermaßfeld. In: Kahlke, R.-D. (Ed.), *Das Pleistozän von Untermaßfeld bei Meiningen (Thüringen)*. Teil 1. Monographien des Römisch-Germanischen Zentralmuseums 40, 1, 385–418.
- (Ed.), 2001a. Das Pleistozän von Untermaßfeld bei Meiningen (Thüringen). Teil 2. Monographien des Römisch-Germanischen Zentralmuseums 40, 2, I–VIII, 419–698, pls. 68–131, suppl. 1.
- (Ed.), 2001b. Das Pleistozän von Untermaßfeld bei Meiningen (Thüringen). Teil 3. Monographien des Römisch-Germanischen Zentralmuseums 40, 3, I–VI, 699–1030, pls. 132–151, suppl. 1–15.
- 2001c. Ein Hinweis auf Herbivoren-Osteophagie aus dem Unterpleistozän von Untermaßfeld sowie Bemerkungen zur Gabelbildung an Knochenenden. In: Kahlke, R.-D. (Ed.), *Das Pleistozän von Untermaßfeld bei Meiningen (Thüringen)*. Teil 3. Monographien des Römisch-Germanischen Zentralmuseums 40, 3, 897–903, pl. 147.
- Kahlke, R.-D., Gaudzinski, S., 2005. The blessing of a great flood: differentiation of mortality patterns in the large mammal record of the Lower Pleistocene fluvial site of Untermassfeld (Germany) and its relevance for the interpretation of faunal assemblages from archaeological sites. *Journal of Archaeological Science* 32, 1202–1222.
- Keiler, J.-A., Benecke, M., Keiler, J., in this volume. Bone modifications by insects from the Early Pleistocene site of Untermassfeld, 1117–1132.
- Landeck, G., Garcia Garriga, J., 2016. The oldest hominin butchery in European mid-latitudes at the Jaramillo site of Untermassfeld (Thuringia, Germany). *Journal of Human Evolution* 94, 53–71.
2017. New taphonomic data of the 1 Myr hominin butchery at Untermassfeld (Thuringia, Germany). *Quaternary International* 436, 138–161.
- Maul, L., 2001. Nagespuren von Kleinsäugetern an Knochenmaterial aus dem Unterpleistozän von Untermaßfeld. In: Kahlke, R.-D. (Ed.), *Das Pleistozän von Untermaßfeld bei Meiningen (Thüringen)*. Teil 3. Monographien des Römisch-Germanischen Zentralmuseums 40, 3, 905–916, pls. 148–151.
- Roebroeks, W., Gaudzinski-Windheuser, S., Baales, M., Kahlke, R.-D., 2018. Uneven Data Quality and the Earliest Occupation of Europe – the Case of Untermassfeld (Germany). *Journal of Paleolithic Archaeology* 1, 5–31.

*Sabine Gaudzinski-Windheuser*

MONREPOS Archäologisches Forschungszentrum  
und  
Museum für menschliche Verhaltensevolution,  
Römisch-Germanisches Zentralmuseum,  
Leibniz-Forschungsinstitut für Archäologie

## PREFACE

The extraordinary find- and species-rich Early Pleistocene fossil deposit of Untermassfeld near Meiningen has been the focus of systematic excavation and documentation since it was discovered in January 1978. Until 1992, the work was carried out by the Institute of Quaternary Palaeontology, Weimar, which then became the Weimar-based Quaternary Palaeontology Group of the Institute of Geosciences at the Friedrich Schiller University, Jena, and since 2000, the Senckenberg Research Station of Quaternary Palaeontology. Taking place nearly every year from 1979 onwards, the duration of the field seasons totals 127 months of active field work. During this time, more than 18,000 palaeontological finds were recovered. Over four decades, these finds have been prepared, conserved and stored together in one Untermassfeld collection in their own custom-made cabinets. The excavation work ended during the summer of 2019 and in agreement with the responsible monument protection authorities specially marked reserved areas have been left untouched for future investigations. The status of the entire site as a protected ground monument of the Free State of Thuringia remains unchanged.

From 1997 to 2019, the field and conservation work was mainly supported and financed by the Senckenberg Research Institute and the Free State of Thuringia, annually approved by the Thuringian State Office for Heritage and Archaeology, the City of Meiningen and the District of Schmalkalden-Meiningen. For the many years of successful collaboration we would like to thank State Archaeologist Sven Ostritz (Erfurt, Weimar) and his team, City Treasurer Klaus-Dieter Schmidt (Meiningen), the Heads of the Department of Budget, Tax and Social Issues of the municipality of Meiningen Börje Scholz and David Kempf, the Mayors of the City of Meiningen Reinhard Kupietz (until 2012) and Fabian Giesder (from 2012), and the District Office of Schmalkalden-Meiningen (Monument Protection Authority) represented by Karin Ganß.

Organization of the field season work and site protection lay in the capable hands of John-Albrecht Keiler (Weimar). Accounting support was provided by Regina Langner (until 2009) and Sabine Schneider (from 2009, both Weimar). We thank Tiefbau Schliewe Untermassfeld for the precise implementation of excavation work requiring heavy technical equipment as well as for the annual use of cranes to open and close active excavation areas. Thanks go to our friend Roland Werner † (Jüchsen) as well as the Heimatverein Jüchsen e. V. for technical assistance in the day-to-day running of the field work and for protection and monitoring of the site during excavation-free periods. For their valuable support in protecting the site against repeated thefts and damage, we would like to thank the Schmalkalden-Meiningen Police Service and the Suhl Criminal Investigation Department.

All excavation work was carried out by the staff of the Senckenberg Research Station of Quaternary Palaeontology, Weimar, with the occasional involvement of student assistants. Conservation of the finds recovered from the year 2000 onwards was the responsibility of Dennis Rössler, Michael Stache (until 2011) and Rebecca Wunder (from 2011). Parallel to the preparation progress, Evelin Haase (Weimar) managed the collection catalogue and created the excavation plans. Management of the collection itself was carried out by Gerald Utschig with the support of Jessica Arnold (both Weimar).

Evaluation of the finds and records from Untermassfeld was conducted by various groups of specialists. Results were published in 1997 and 2001 in three volumes of the monograph series of the Römisch-Germanisches Zentralmuseum, Mainz, as well as in 2006 in an English language summary detailing the knowledge acquired at the time of publication. The present fourth volume of the Untermassfeld monograph contains numerous new findings on site genesis and absolute age, along with bone modifications, as well as ichthyo-, herpeto- and avifauna. Substantial new find of dental and skeletal elements of hitherto little-known

artiodactyls and perissodactyls of the western Palaearctic are extensively discussed. The photographs contained in this volume were mainly produced by Thomas Korn (until 2015) and Susann Döring (from 2016) (both Weimar). Evelin Haase created all graphics and arranged the photographs within the figures. Christina Nielsen-Marsh (Leipzig) translated or edited the majority of the English texts and Bärbel Fiedler (Weimar) was responsible for the editorial finishing of the manuscripts. We thank Stefan Flohr (Hildesheim), Matthias Hartmann (Erfurt), Lutz Katzschmann (Jena), John-Albrecht Keiler (Weimar), Dimitris S. Kostopoulos (Thessaloniki), Lutz Christian Maul (Weimar), Gerald Mayr (Frankfurt/M.), Paul P. A. Mazza (Firenze), Richard Albert Roper (Frankfurt/M.), Davit Vasilyan (Fribourg), and one anonymous reviewer for reviewing one or more of the contributions in this volume.

We are grateful to Sabine Gaudzinski-Windheuser (Mainz, Neuwied), who for many years was our cooperation partner within the Römisch-Germanisches Zentralmuseum, which ensured the smooth-running of the printing of the fourth volume of the Untermassfeld monograph, and we thank Claudia Nickel (Mainz) for her help, and attention to detail in publishing this volume. Our heartfelt thanks go last, but not least, to all of our esteemed colleagues for their many years of tireless work and service to the Untermassfeld project.

*Weimar, January 2020*

*Ralf-Dietrich Kahlke*

## NEW RESULTS ON EQUIDS FROM THE EARLY PLEISTOCENE SITE OF UNTERMASFELD

Abstract	1295	4.1. Apollonia	1307
1. Introduction	1295	4.2. Le Vallonnet and La Tour Grimaldi	1312
2. Material and methods	1296	5. Comparisons with finds from other localities	1313
3. Description of new finds of <i>Equus (Sussemionus) wuesti</i> Musil, 2001 from Untermassfeld	1297	5.1. Süssenborn	1313
3.1. Upper cheek teeth	1297	5.2. Akhalkalaki	1315
3.2. Mandibles and lower cheek teeth	1299	5.3. Venta Micena	1315
3.3. Third metacarpals (Mc III) and metatarsals (Mt III)	1300	5.4. Further sites from Spain, France and Italy	1318
3.4. Anterior first phalanges (Ph1 ant)	1300	6. <i>Equus</i> sp. from Untermassfeld	1319
3.5. Other limb bones	1300	7. Conclusions	1319
4. Comparisons with finds from localities of about the same age as Untermassfeld	1307	Acknowledgements	1319
		References	1320

### Abstract

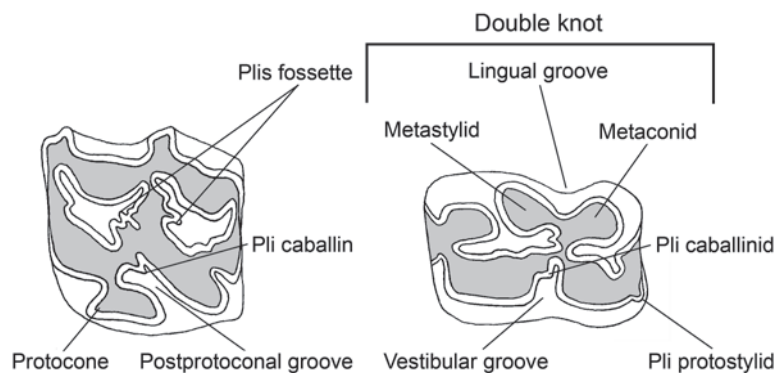
New and ancient material of *Equus (Sussemionus) wuesti* Musil, 2001 from the Epivillafranchian site of Untermassfeld is described and compared with other middle-sized species between 1.5 and 0.6 Ma BP. Results of this analysis show that *Equus (S.) wuesti* represents another species inside the Sussemione group close to but different from the equids of Venta Micena (Spain) and Akhalkalaki (Georgia). Both by its age and geographical localization, *E. (S.) wuesti* fits perfectly inside the range of Sussemiones and represents an important link between the older and western Venta Micena and the younger and eastern Akhalkalaki. A second species at Untermassfeld identified from a radius too large for *Equus (S.) wuesti* could belong to the large sized members of the same group described at Süssenborn, Akhalkalaki, and NE Siberia. As well as several other sites about the same age, the site of Untermassfeld documents a case of sympatry of two equids species of different size.

However, the Untermassfeld equid remains are different from *Equus apolloniensis* from the Greek locality of Apollonia, which in turn has affinities with the extant wild ass *Equus africanus* and could represent a step within the lineage of asses soon after their differentiation.

### 1. Introduction

Most equid fossils from Untermassfeld site were already described by Musil (2001) who found that they possessed both primitive and derived characters and referred them to a new species, *Equus wuesti* Musil, 2001, close to, but different from, *Equus altidens* von Reichenau, 1915. At that time, however, the upper dentition was represented only by decidual teeth and the lower dentition only by very worn series.

During following excavations (Kahlke in this volume), more fossils were found, including more cheek teeth and one large radius, too large for the middle-sized dominant species. Finding two *Equus* species at the same locality does not necessarily point to a mixing of fossils from different stratigraphical levels; they may



**Fig. 1** Left upper premolar and right lower premolar of *Equus*.

have cohabited. Indeed, in East Africa, the ranges of extant *E. grevyi* Oustalet, 1882, and *E. burchelli* Boddaert, 1785, overlap though they do not share the same ecological niche. Occurrence of two fossil *Equus* is possible too: *E. cf. suessenbornensis* Wüst, 1900, and *E. hipparionides* Vekua, 1960, at Akhalkalaki (Georgia) is a good example.

At Süssenborn (Germany) where deposits span a long time, the coexistence of *E. suessenbornensis*, *E. altidens* von Reichenau, 1915, and *E. marxi* von Reichenau, 1915 (these species will be discussed below) is less certain.

The last mentioned five forms were referred to the new subgenus *Sussemionus* (Eisenmann 2010) defined by dental characters (Eisenmann 2006), in particular the occurrence of plis protostylid and/or elongated and bilobated metaconids on lower teeth, very short protocones and deep postprotoconal grooves on uppers (Fig. 1). These characters, however, are not constant, even inside the same series. In consequence their presence is a good indication, their absence is not. *Allohippus* »stenonine« patterns may occur in *Sussemionus*. *Sussemionus* had vast geographical and chronological ranges. Their origin is North-American but they spanned through Asia and Europe and even reached Africa (Eisenmann 2006). In time they persisted 2 My at least and were still present 40,000 BP in Southwestern Siberia (Eisenmann and Vasiliev 2011).

The fossiliferous sands of Untermassfeld are positioned around the onset of the Jaramillo polarity subzone, with an age of approximately 1.07 Ma BP (Ellenberg and Kahlke 1997; Kahlke 2000; Kahlke and Gaudzinski 2005; Kahlke 2006). We will compare the equid fossils from Untermassfeld first with fossils of about the same age, mainly Appollonia (Greece), Vallonnet (France), and Tour de Grimaldi (Italy), then with some other fossils, mainly Venta Micena (Spain), Süssenborn (Germany), and Akhalkalaki (Georgia). Unfortunately our knowledge and understanding of Early/Middle Pleistocene *Equus* are still poor and uncertain. This is especially the case of *E. altidens*. In our captions we prefer to give names of localities and avoid the use specific names unless the species had been described in them.

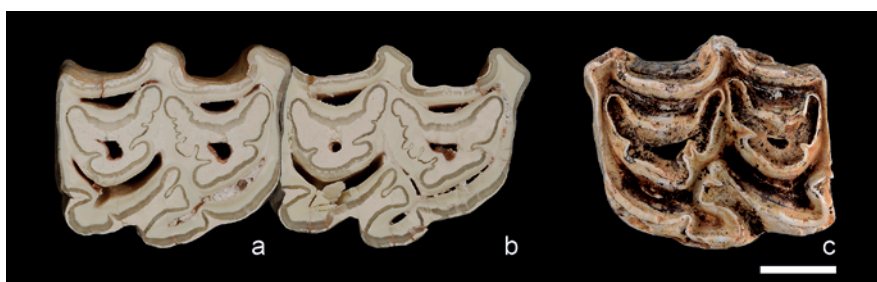
## 2. Material and methods

The equid remains are not very numerous but well preserved. They include fragmentary maxillaries and mandibles, upper and lower cheek teeth, and limb bones. Measurements and photographs as well as comparisons using Simpson's diagrams (1941) will be used for their description. The technique of measurement is described in Eisenmann (2009). However, it may be useful to add a figure here to explicit the morphological observations on cheek teeth (Fig. 1).

The fossils of Untermassfeld are labelled Mei. for Meiningen and preserved at the IQW collection of Senckenberg Research Station of Quaternary Palaeontology Weimar. AKHA is the abbreviation for Akhalkalaki and



**Fig. 2** *Equus (Sussemionus) wuesti* Musil, Untermassfeld. – Maxillary fragment with left P<sup>3</sup>-M<sup>3</sup> and right P<sup>1</sup>-M<sup>3</sup> tooth rows IQW 2010/31 393 (Mei. 30555), occlusal view. – Scale: 30mm.



**Fig. 3** *Equus (Sussemionus) wuesti* Musil, Untermassfeld. – **a–b** Right P<sup>3</sup>-P<sup>4</sup> IQW 2010/31 393 (Mei. 30555), occlusal view. – **c** Left P<sup>3</sup> IQW 1999/26 560 (Mei. 26089), occlusal views. – Scale: 10mm.

label for fossils preserved in the collections of the Institute of Paleobiology at Tbilisi. APL is the abbreviation for Apollonia and label for fossils preserved at the University of Thessaloniki. DA is the abbreviation for Denizli and label for fossils in the Pamukkale University, Denizli. Fossils from Le Vallonet and La Tour de Grimaldi are preserved in the Regional Prehistoric Museum of Menton. NHM is the abbreviation of the Naturhistorisches Museum Basel. The material of Venta Micena (VM) is stored at the Institut Paleontologic Dr M. Crusafont, in Sabadell (Barcelona), and at the Museo de Prehistoria J. Gibert, in Orce (Granada). ZIN refers to the collection of the Zoological Institute of the Russian Academy of Sciences in St Petersburg.

### 3. Description of new finds of *Equus (Sussemionus) wuesti* Musil, 2001 from Untermassfeld

#### 3.1. Upper cheek teeth

IQW 2010/31 393 (Mei. 30555) is a newly found subadult fragmentary maxillary (Fig. 2).

The P<sup>3</sup> and P<sup>4</sup> were sectioned in order to better show the enamel pattern. Protocones are short, postprotoconal grooves are not very deep, plis caballins are normally developed, and fossettes are plicated (Fig. 3a–b). Another P<sup>3</sup>, IQW 1999/26 560 (Mei. 26089), although very worn, shows the same aspect (Fig. 3c). Measurements are given in Table 1.

		Pli cab.	Plis fossette	Length	Protocone	Width	Height	Protostyl
dP <sup>2</sup>	IQW 1983/19264 (Mei. 18784)	+	5	44	6	23	20	
dP <sup>3</sup>	IQW 1983/19264 (Mei. 18784)	+	1	31	9	24	c. 20	
dP <sup>4</sup>	IQW 1983/19264 (Mei. 18784)		1	34	11	22	20	
p <sup>2</sup>	IQW 1980/16993 (Mei. 16514)			38*	c. 6.5*	25*	62	unworn
p <sup>3</sup>	IQW 2010/31393 (Mei. 30555)	+	9	30.3*	8.2*	25.9*		
p <sup>4</sup>	IQW 2010/31393 (Mei. 30555)	+	11	29.4*	9.1*	26.7*		
p <sup>3</sup>	IQW 1999/26560 (Mei. 26089)	+	5	28.5	7.4	25.1	37.6	

**Table 1** Upper cheek teeth of Untermassfeld *Equus (Sussemionus) wuesti*. Measures in mm. \* – at mid-height or section.



**Fig. 4** *Equus (Sussemionus) wuesti* Musil, Untermassfeld. – Right mandibular fragment IQW 1998/26401 (Mei. 25930) with P<sub>3</sub>-M<sub>2</sub>, occlusal view. – Scale: 30 mm.

	Character	Male, very old IQW 1981/17619 (Mei. 17141)	<1 year IQW 1980/16092 (Mei. 15603)
	Diastema	3	96
	Length of P <sub>2</sub> -P <sub>4</sub>	4	86
	Length of M <sub>1</sub> -M <sub>3</sub>	4 bis	82
	Length of P <sub>2</sub> -M <sub>3</sub>	5	170
	Symphysis length	6	92
	Breadth at posterior borders of I <sub>3</sub>	7	54
	Height in front of dP <sub>2</sub>	9	51.5
	Height behind dP <sub>4</sub>	10	58
	Least symphysis breadth	12	44
	Canine length	13	16.5

**Table 2** Mandibles of Untermassfeld *Equus (Sussemionus) wuesti*. Measures in mm.

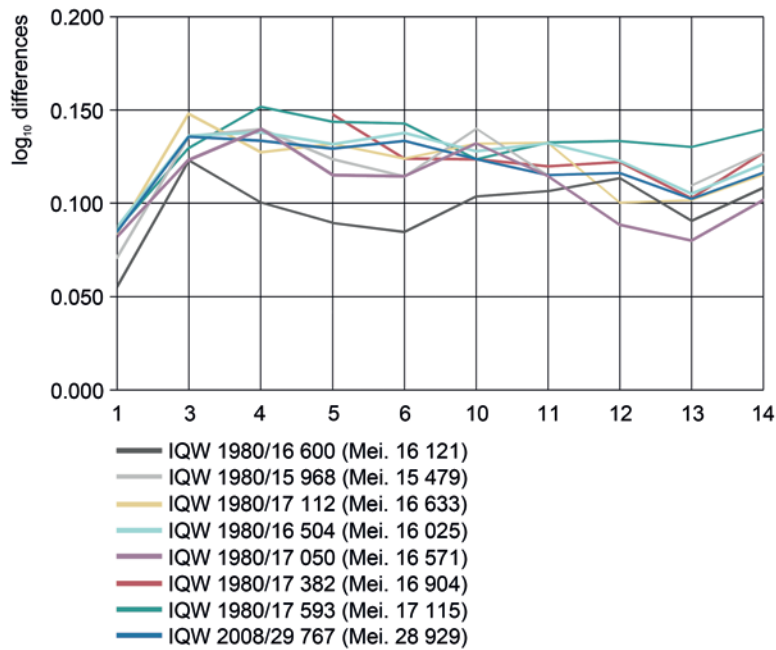


		Length	Postflexid	LDKnot	Width	Pli caballinid	Height	Protostylid
P <sub>2</sub>	IQW 1980/17067 (Mei. 16588)	30			16.5			0
P <sub>3</sub>	IQW 1980/17067 (Mei. 16588)	27.5		16.8	16		c. 30	
P <sub>4</sub>	IQW 1980/17067 (Mei. 16588)	27		15.1	17		34	
M <sub>1</sub>	IQW 1980/17067 (Mei. 16588)	22			16			
M <sub>2</sub>	IQW 1980/17067 (Mei. 16588)	26			15			
M <sub>3</sub>	IQW 1980/17067 (Mei. 16588)	33			13		23	
P <sub>3</sub>	IQW 1998/26401 (Mei. 25930)		14.2				c. 34	
P <sub>4</sub>	IQW 1998/26401 (Mei. 25930)	30	15	17				
M <sub>1</sub>	IQW 1998/26401 (Mei. 25930)	25		13				
M <sub>2</sub>	IQW 1998/26401 (Mei. 25930)	27	8	14		0		
P <sub>2</sub>	IQW 1989/23133 (Mei. 22652)	33*			15*		59	unworn
P	IQW 1989/23121 (Mei. 22640)	29*	13*	17*		0		
M <sub>1</sub>	IQW 1989/23094 (Mei. 22613)	26	9	15		0		
M <sub>2</sub>	IQW 1980/17388 (Mei. 16910)	c. 27*		13*		0		

**Table 3** Lower cheek teeth of Untermassfeld *Equus (Sussemionus) wuesti*. Measures in mm. \* – at mid-height or section. LDKnot – length of the double knot.

### 3.2. Mandibles and lower cheek teeth

Several fragmentary mandibles were illustrated and measured by Musil (2001). Most specimens were either juvenile or very worn. One new specimen brings some additional information. IQW 1998/26401 (Mei. 25930) is a fragmentary tooth row (P<sub>3</sub>-M<sub>2</sub>); the metastylid is pointed on the P<sub>3</sub>, rounded in the other teeth, the vestibular groove is deep on the molars; the pattern is stenonine (**Fig. 4**). Measurements are given in **Tables 2–3**.



**Fig. 5** *Equus* (*Sussemionus*) *wuesti* Musil, Untermassfeld. Log10 differences of Mt III characters 1, 3–6, 10–14 (explanation of numbers see Table 5) between extant *Equus hemionus* Pallas as reference.

### 3.3. Third metacarpals (Mc III) and metatarsals (Mt III)

Most are slender and deep in the diaphysis (Tables 4–5). While the Mc III sample appears homogeneous, the Mt III is not. One Mt III, IQW 1980/16 600 (Mei. 16 121), is notably shorter and smaller by most its dimensions (Fig. 5).

### 3.4. Anterior first phalanges (Ph1 ant)

Beside the specimen illustrated by Musil (2001), there are three Ph1 ant (Fig. 6, Table 4).



**Fig. 6** *Equus* (*Sussemionus*) *wuesti* Musil, Untermassfeld. Anterior first phalanges. – **a–b** IQW 1980/17 109 (Mei. 16 630), anterior, posterior views. – **c–d** IQW 1980/17 464 (Mei. 16 986), anterior, posterior views. – **e–f** IQW 1986/21 294 (Mei. 20 813), anterior, posterior views. – Scale: 30 mm.

### 3.5. Other limb bones

Their measurements are given in Tables 4–8.

	IQW 1980/17439 (Mei. 16961) juv	IQW 1998/26413 (Mei. 25942)	IQW 1989/23311 (Mei. 22830)	IQW 1986/21670 (Mei. 21189)	IQW 1984/20272 (Mei. 19792)	IQW 1980/17589 (Mei. 17111)	IQW 1980/17188 (Mei. 16710)	IQW 1980/17011 (Mei. 16532)	IQW 1980/16942 (Mei. 16463)	IQW 1980/16883-4 (Mei. 16404-5)	IQW 1980/16585 (Mei. 16106)	IQW 1980/16199 (Mei. 15710)	IQW 1980/15987 (Mei. 15498)	IQW 1980/15452 (Mei. 14964)	IQW 1980/15438 (Mei. 14950)
Mc III	1	2	3	4	5	6	7	8	9	10	11	12	13	14	13 bis
Greatest length	255	248	35	54	36.5	44	19	12	c. 3	53	50	37	30	34	29.5
Medial length	263	256	36	31.5	37.7	45	16	9	0 or 6	50.7	49	37	29.7	33	28.5
Smallest breadth	258	244	38	29	53.5	36.5	17	10.5	0	49	49	39	29	28.5	28.2
Smallest depth	263	256	36	31.5	37.7	45	16	9	0 or 6	50.7	49	39	29	33	28.2
Proximal breadth	258	244	38	29	53.5	36.5	17	10.5	0	49	49	39	29	33	28.2
Proximal depth	258	244	38	29	53.5	36.5	17	10.5	0	49	49	39	29	33	28.2
Diameter of facet for os carpale III	253	243	34.5	28	52	42	18	10	1	48.3	45	34	26.5	29.5	26
Diameter of facet for os carpale IV	253	243	34.5	28	52	42	18	10	1	48.3	45	34	26.5	29.5	26
Diameter of facet for os carpale IV	253	243	34.5	28	52	42	18	10	1	48.3	45	34	26.5	29.5	26
Diameter of facet for os carpale II	253	243	34.5	28	52	42	18	10	1	48.3	45	34	26.5	29.5	26
Distal supra-articular breadth	253	243	34.5	28	52	42	18	10	1	48.3	45	34	26.5	29.5	26
Distal articular breadth	253	243	34.5	28	52	42	18	10	1	48.3	45	34	26.5	29.5	26
Depth of the sagittal crest	253	243	34.5	28	52	42	18	10	1	48.3	45	34	26.5	29.5	26
Least depth of medial condyle	253	243	34.5	28	52	42	18	10	1	48.3	45	34	26.5	29.5	26
Greatest depth of medial condyle	253	243	34.5	28	52	42	18	10	1	48.3	45	34	26.5	29.5	26
Least depth of lateral condyle	253	243	34.5	28	52	42	18	10	1	48.3	45	34	26.5	29.5	26
Mc III	n	x	min	max	s	v									
1	10	255.9	243	263	5.34	2.09									
3	14	35.8	34	38	1.19	3.33									
4	13	29.1	27	31.5	1.49	5.14									
5	12	53.1	50	56	1.59	2.99									
6	13	35.5	33.5	39	1.60	4.49									
10	10	50.7	48.3	53	1.43	2.82									

**Table 4** Third metacarpals (Mc III) and first anterior phalanges (Ph1 ant) of Untermassfeld *Equus (Sussemionus) wuesti*. Measures in mm and statistics (\*associated specimens).

	11	10	48.5	45	50.2	1.46	3.01
	12	10	36.4	34	39	1.41	3.88
	13	10	28.9	26.5	30.5	1.25	4.33
	14	10	32.2	29.5	34	1.35	4.19
	7	12	43.5	42	45.5	1.22	2.82
	8	13	17	15.7	19	1.12	6.56
					IQW 1986/21 294 (Mei. 20813)		
					IQW 1980/17 464 (Mei. 16986)		
					IQW 1980/17 109 (Mei. 16630)		
					IQW 1980/17 068 (Mei. 16589)		
	Ph1 ant						
Greatest length	1	94.5	90	90	92.2		
Anterior length	2	86	82	80	85		
Smallest breadth	3	35	32.7	33	33.7		
Proximal breadth	4	55.5	53	54	53		
Proximal depth	5	39	37	36.5	38		
Distal supra-articular breadth	6	48	43.1	45	46.7		
Greatest length of trigonum phalangis	7	60	61.5	61	61		
Smallest length of trigonum phalangis	8	54	53	53	53.5		
Posterior length	9	84	80	79	82		
Medial supratuberosital length	10	71	66	66.5	69		
Lateral supratuberosital length	11	70	67	67.5	69		
Medial infra-tuberosital length	12	15	15.5	15.5	14		
Lateral infra-tuberosital length	13	15	13	14	13.7		
Distal articular breadth	14	45.1	41.2	43	44.5		
Distal articular depth	15	26	26	25.9	26		

Table 4 (continued)

		IQW 1980/15968 (Mei. 15479)	IQW 1980/16504 (Mei. 16025)	IQW 1980/16543 (Mei. 16064)	IQW 1980/16600 (Mei. 16121)	IQW 1980/17050 (Mei. 16571)	IQW 1980/17112 (Mei. 16633)	IQW 1980/17382 (Mei. 16904)	IQW 1980/17593 (Mei. 17115)	IQW 2008/29767 (Mei. 28929)	IQW 1980/15610 (Mei. 15122) juv	IQW 1980/16953 (Mei. 16474) juv
	<b>Mt III</b>	290	302		280	298	300	299	300	300	290	
Greatest length	1		297		272		291			294		
Medial length	2											
Smallest breadth	3	35	35	34	34	34	36	35	34.5	35	30	
Smallest depth	4	35	34.9	34	32	35	34		36	34.5	31	
Proximal breadth	5	53	54		49	52	54	56	55.5	53.7		
Proximal depth	6	45	47.5		42	45	46	46	48	47		
Diameter of facet for os tarsale III	7		50		47	47	50	50	51.5	50		
Diameter of facet for os tarsale IV	8		12.5		11.5	12.5	14	15	14	14		
Diameter of facet for os tarsale II	9	7	10		8	7	12	10	9.5			
Distal supra-articular breadth	10	53	51.5		48.7	52	52	51	51	51	49	45
Distal articular breadth	11	49	51		48	48.9	51	49.5	51	49	>46	42
Depth of the sagittal crest	12	c. 39	40		39.2	37	38	40	41	39.4	>36	
Least depth of medial condyle	13	30.5	30.2		29.2	28.5	30	30	32	30		c. 27.5
Greatest depth of medial condyle	14	35	34.5		33.5	33	34	35	36	34.1		
Least depth of lateral condyle	13 bis	30	29.1		28.4	27.5	29	30	30.5			25.5
	<b>Mt III</b>	<b>n</b>	<b>x</b>	<b>min</b>	<b>max</b>	<b>s</b>	<b>v</b>					
	1	8	296.1	280	302	7.45	2.52					
	3	4	34.7	34	36	0.67	1.92					
	4	8	34.4	32	36	1.17	3.4					
	5	8	53.4	49	56	2.19	4.09					
	6	8	45.8	42	48	1.89	4.12					

**Table 5** Third metatarsals (Mt III), tali, and calcanei of Untermassfeld *Equus (Sussemionus) wuesti*. Measures in mm.



	Calcaneum							
	IQW 1980/15431 (Mei. 14943)	IQW 1980/15975 (Mei. 15486)	IQW 1980/16597 (Mei. 16118)	IQW 1980/17054 (Mei. 16575)	IQW 1980/17091 (Mei. 16612)	IQW 1980/17365 (Mei. 16887)	IQW 1980/17571 (Mei. 17093)	IQW 1982/18033 (Mei. 17553) juv
Greatest length	118	123	119	124.5		124		118
Length of proximal part	79	84	81	83		81	c. 82	82
Smallest breadth	21	23	23.5	21		23		21
Proximal breadth	38	39.5	37	37	38.5	37.5	39	38.5
Proximal depth	52	58	58	54	54	55	55	56
Distal depth		58	57			55		58
Distal breadth	55	62	61	59		60		54 sic
Maximal diameter of sustentaculum tali	40	43	42	40		40		39
Articular diameter of sustentaculum tali	37	40	41	37		39		38

	Calcaneum	n	x	min	max	s	v
1	1	6	121.1	118	124.5	3.07	2.51
2	2	7	81.7	79	84	1.6	1.96
3	3	7	21.9	21	23.5	1.17	5.34
4	4	8	38.1	37	39.5	0.92	2.4
5	5	8	55.3	52	58	2.05	3.72
6	6	5	56.4	54	58	1.82	3.22
7	7	7	58.7	54	62	3.04	5.18
8	8	7	40.6	39	43	1.4	3.44
9	9	7	38.9	37	41	1.57	4.05

**Table 5** (continued)

Humerus		IQW 1980/15900 (Mei. 15411)	IQW 1980/16302 (Mei. 15813)	IQW 1980/16371 (Mei. 15882)	IQW 1980/17448 (Mei. 16970)	IQW 1980/17480 (Mei. 17002)	IQW 1981/17616 (Mei. 17138)
Greatest length	1					c. 290	
Smallest breadth	3	40	39	39		40	40
Depth at same level	4					51.5	49
Distal breadth	7	80	81	77	75	79	80
Distal medial depth	8	88	89	84	82	86.5	87
Height of medial condyle	9	52	55	51	52	51	51
Smallest height of trochlea	10	40	41	40	39	39	40.5
Height of trochlea	11	49	48.5	47	46	46	47
Height of lateral condyle	12	43.5	43.5	41	40.5	41	42.5
Radius		IQW 1980/15228 (Mei. 14710)	IQW 1980/15275 (Mei. 14787)	IQW 1980/16304 (Mei. 15815)	IQW 1981/17638 (Mei. 17160)	IQW 1980/16550 (Mei. 16071) juv	
Greatest length	1	c. 400	348	353	355		
Medial length	2'		333	327	329		
Lateral length	2		329	330	332		
Smallest breadth	3	55	46	47	45	39	
Smallest depth	4'	35	31	31.5	31	24.5	
Greatest proximal breadth	4		88	89	91	80	
Proximal articular proximal breadth	5		79	78	81	77	
Proximal articular depth	6		43	42	43	42	
Greatest distal breadth	7	98	84	83	80		
Greatest distal breadth	8	c. 83	70	67	67		
Distal articular depth	9	c. 48	40.2	40	41		
Breadth of medial condyle	10	32	27	28	29		
Breadth of lateral condyle	11		19	17	18		

**Table 6** Humeri and radii of Untermassfeld *Equus (Sussemionus) wuesti*, and radius of Untermassfeld *Equus (?Sussemionus)* sp. Measures in mm.



Femur		IQW 1980/15397 (Mei. 14909)	IQW 1980/16965 (Mei. 16486)	IQW 1980/17384 (Mei. 16906)	IQW 1980/17395 (Mei. 16917)					
Smallest breadth	3	c. 45		43						
Depth at same level	4	57		45						
Proximal breadth	5				125					
Depth of caput femoris	7		65.5		65.2					
Tibia		IQW 1980/15453 (Mei. 14965)	IQW 1980/15910 (Mei. 15421)	IQW 1980/16506 (Mei. 16027)	IQW 1980/17047 (Mei. 16568)	IQW 1980/17083 (Mei. 16604)	IQW 1980/17377 (Mei. 16899)	IQW 1981/17698 (Mei. 17220)	IQW 1984/20087 (Mei. 19607)	IQW 2016/43779 (Mei. 49088)
Greatest length	1			405	380		390	368	365	
Medial length	2'			372	358		368	345	337	
Lateral length	2									
Smallest breadth	3	50	50	47	47		49	48	46	
Smallest depth	4	32	33	32.5	34		34	32.6	36	
Proximal breadth	5				105		106		110	
Proximal depth	6				96			c. 91		
Distal breadth	7	75	48	78	80	77		80	80	79
Distal depth	8	49	54	52	53	53	51	50	50	
Length of fossa digitalis	9			58	56			54	63	
Breadth of fossa digitalis	10			22	22			25	c. 23	

**Table 7** Femora and tibiae of Untermassfeld *Equus (Sussemionus) wuesti*. Measures in mm.

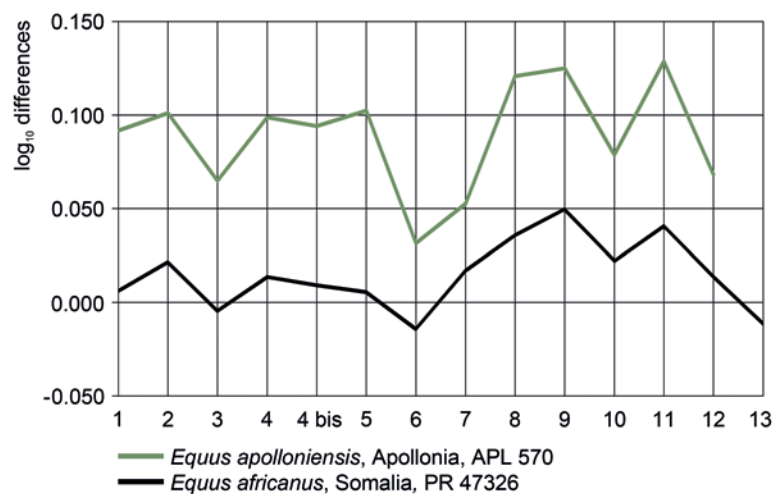
#### 4. Comparisons with finds from localities of about the same age as Untermassfeld

##### 4.1. Apollonia

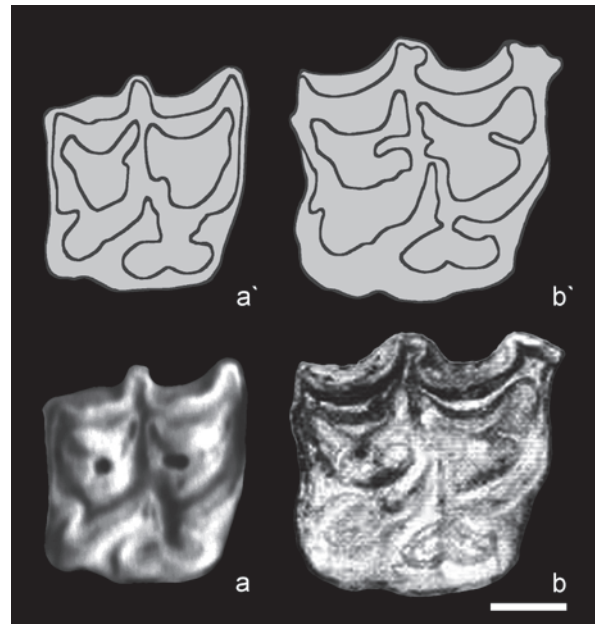
Apollonia P-1 belongs to the Platanochori Formation from the Early Pleistocene of Mygdonia Basin (Macedonia, northern Greece). The large mammal assemblage of Apollonia is dated to the beginning of the 1.2–0.9 Ma BP interval (Spassov 2003), and represents the most complete fossil assemblage of the South-Eastern European Epivillafranchian. Equid fossils are very numerous and well preserved. *E. apolloniensis* was described by Koufos et al. (1997). According to the published data, it has many morphological resemblances

		ant	ant	post	post					
	Ph2	IQW 1980/15752 (Mei. 15264)	IQW 1980/16549 (Mei. 16070)	IQW 1980/15832 (Mei. 15343)	IQW 1980/16973 (Mei. 16494)					
Greatest length	1	53	50	49	51					
Anterior length	2	41	40	39						
Smallest breadth	3	46	47	43	42					
Proximal breadth	4	52.5	c. 52	49.7	49					
Proximal depth	5	35	35	33						
Distal breadth	6	50	50.5	47	46					
Distal depth	7	30	32	29	28.5					
	Ph3	IQW 1980/16771 (Mei. 16292)	IQW 1980/15447 (Mei. 14959)	IQW 1980/15884 (Mei. 15395)	IQW 1980/16056 (Mei. 15567)	IQW 1980/17101 (Mei. 16622)	IQW 1980/17400 (Mei. 16922)	IQW 1980/17495 (Mei. 17017)	IQW 1989/23122 (Mei. 22641)	?
Anterior length	1	54	60	58	54		53	55		
Dorsal length	1'	58	61	60.5	58		57	56		
Plantar length	2	67								
Height	3	47	44	45	44			43.5		
Plantar breadth	4	73	c. 65	c. 67	> 60			c. 60		
Articular breadth	5	51.5	46	49	c. 47	46		45	c. 47	
Articular antero-posterior diameter	6	29	30	30	26.5	31.5	29	28	28	
Plantar »circumference«	7	c. 187	c. 160	c. 160						

**Table 8** Second (Ph2) and third (Ph3) phalanges of Untermassfeld *Equus (Sussemionus) wuesti*. Measures in mm.



**Fig. 7** Log10 differences of mandible characters 1–13 (explanation of numbers see Table 2) between extant *Equus hemionus* Pallas as reference, and *Equus africanus* (Heuglin et Fitzinger) and *Equus apolloniensis* Koufos, Kostopoulos et Sylvestrou.



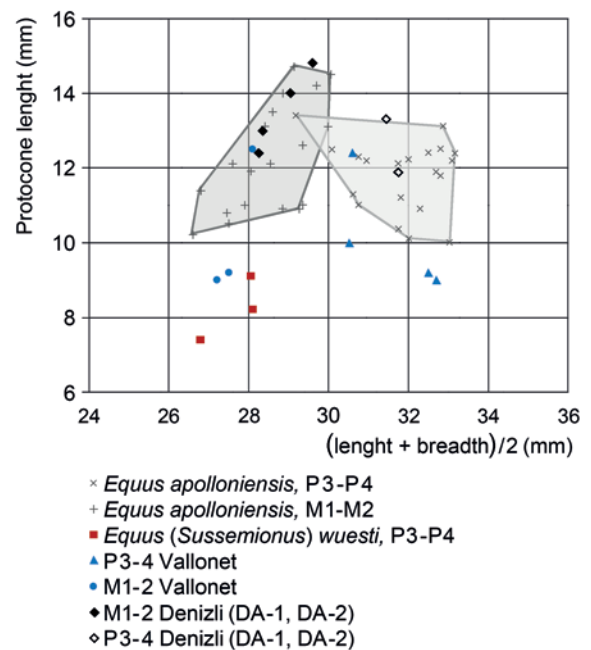
**Fig. 8.** *Equus africanus* (Heuglin et Fitzinger), Somali. – **a–a'** Left P<sup>4</sup> (inverted) Basel NHM 3267, occlusal views. | *Equus apolloniensis* Koufos, Kostopoulos et Sylvestrou, Apollonia. – **b–b'** Right P<sup>4</sup> APL 148, occlusal views. – Scale: 10mm.

with the extant Wild Ass, *E. africanus*, although it was much larger. Because of bad preservation skulls are no help but the well-preserved mandible APL 570 is close by its proportions to an extant Somali Ass (Fig. 7). There is no mandible from Untermassfeld allowing a comparison.

On upper cheek teeth the short and often grooved protocones are very similar (Fig. 8) while they differ from the oblique and not grooved protocones of Untermassfeld; the postprotoconal groove is deep (Fig. 8).

Furthermore the premolars of *E. (Sussemionus) wuesti* are much smaller as indicated by the scatter diagram of the protocone length versus the average occlusal diameter (Fig. 9).

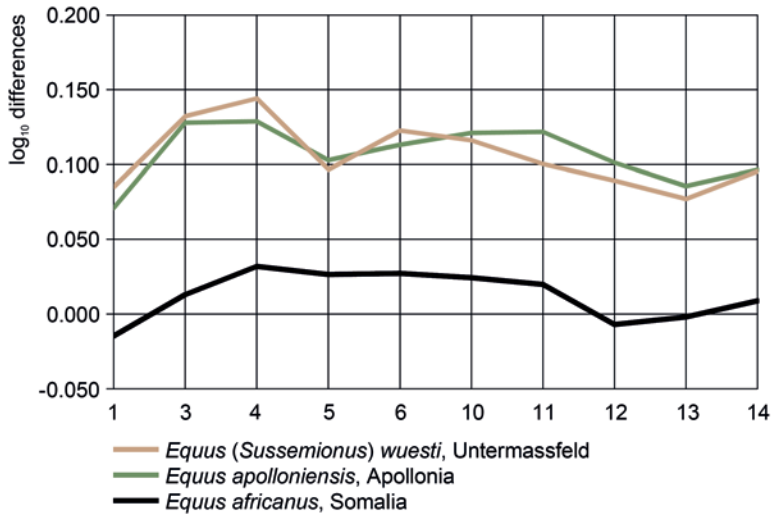
On lower cheek teeth double knots are round and vestibular grooves shallow on all teeth like in *E. africanus* (Fig. 10) thereby again differing from the deep vestibular grooves on the molars of Untermassfeld (Fig. 4).



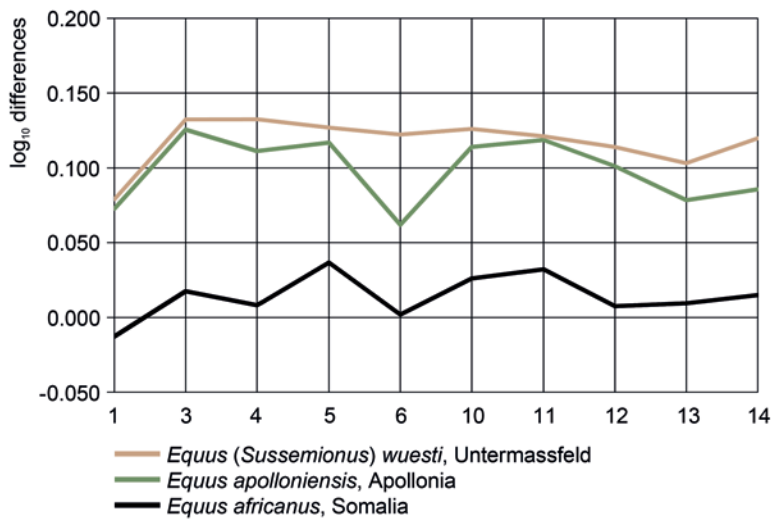
**Fig. 9** Scatter diagram of average occlusal diameter (length + breadth)/2 of P<sup>3</sup>-P<sup>4</sup> and M<sup>1</sup>-M<sup>2</sup>. Data from Apollonia *E. apolloniensis* (pers. comm. G.D. Koufos) and Denizli *E. cf. apolloniensis* (Boulbes et al. 2014).



**Fig. 10** *Equus africanus* (Heuglin et Fitzinger), Somalia. – **a–a'** Right P<sub>2</sub>-M<sub>3</sub> ZIN 7204, occlusal views. | *Equus apolloniensis* Koufos, Kostopoulos et Sylvestrou, Apollonia. – **b–b'** Right P<sub>2</sub>-M<sub>3</sub> APL 147, occlusal views. – Scale: 30mm.



**Fig. 11** Log<sub>10</sub> differences of Mc III characters 1–14 (explanation of numbers see Table 4) between extant *Equus hemionus* Pallas as reference, *Equus africanus* (Heuglin et Fitzinger), and *Equus apolloniensis* Koufos, Kostopoulos et Sylvestrou.



**Fig. 12** Log<sub>10</sub> differences of Mt III characters 1–14 (explanation of numbers see Table 5) between extant *Equus hemionus* Pallas as reference, *Equus africanus* (Heuglin et Fitzinger) and *Equus apolloniensis* Koufos, Kostopoulos et Sylvestrou.

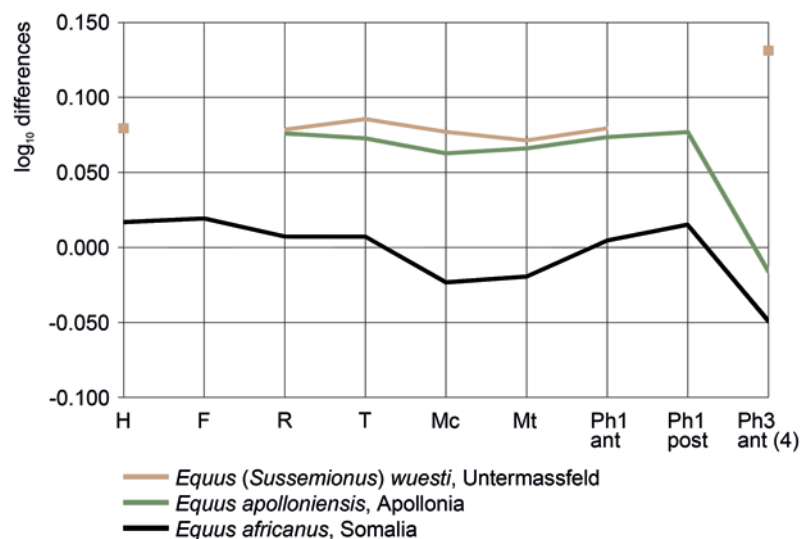
The metacarpals are also similar to some African Wild Asses (Fig. 11) and slightly differ from *Equus (Sussemionus) wuesti* by smaller depths of diaphysis and proximal end (measurements 4 and 6).

Metatarsals of Untermassfeld differ also from *E. apolloniensis* and *E. africanus* (Fig. 12).

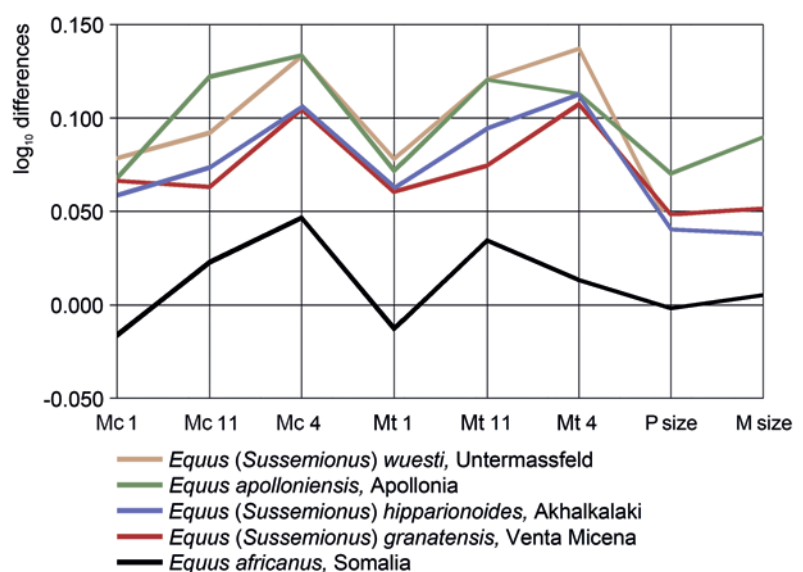
The limb bones proportions of *E. apolloniensis* and *E. africanus* are close (Fig. 13). The third anterior phalanx of *E. (Sussemionus) wuesti* is much wider.

Finally, in *E. (Sussemionus) wuesti* (Tables 2–5) as well as in *E. (Sussemionus) granatensis* and *E. (Sussemionus) hipparionoides*, upper cheek teeth are proportionally smaller relative to metapodials than in *E. apolloniensis* and *E. africanus* (Fig. 14).

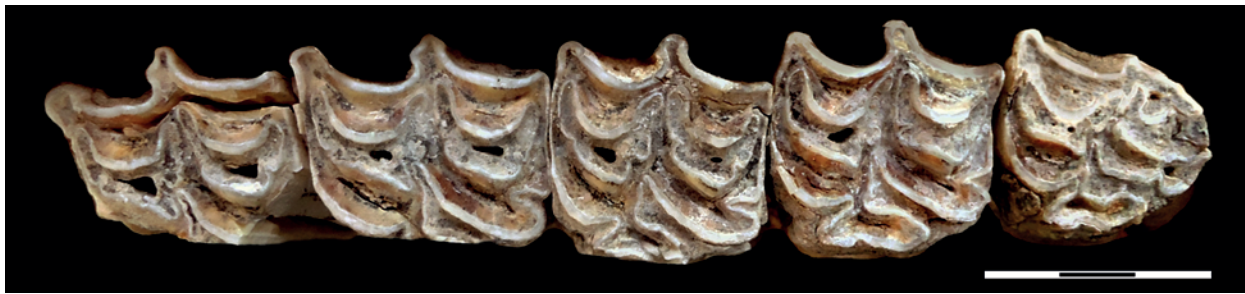
Some other sites have yielded remains referred to *E. apolloniensis*: From the new locality Platanochori-1 of Mygdonia Basin (Macedonia, northern Greece) Konidaris et al. (2015) figured a fragment of *Equus* metacarpal about the size of *E. apolloniensis*. The fauna is indicative of a latest Villafranchian age, similar to that of Apollonia-1 (Konidaris et al. 2015). The published data, however, are not enough for a discussion. Koufos et al. (1997) reported the presence of this species in other Early Pleistocene Greek localities (Alikes, Ionian islands).



**Fig. 13** Log<sub>10</sub> differences of limb bone lengths between extant *Equus hemionus* Pallas as reference, *Equus africanus* (Heuglin et Fitzinger) and *Equus apolloniensis* Koufos, Kostopoulos et Sylvestrou. Lengths of humerus (H), femur (F), radius (R), tibia (T), metacarpus (Mc), metatarsus (Mt), anterior phalanx 1 (Ph1 ant), posterior phalanx 1 (Ph1 post), maximal breadth of anterior phalanx 3 [Ph3 ant (4)].



**Fig. 14** Comparison between teeth and metapodial sizes in *Equus africanus* (Heuglin et Fitzinger) and *Equus apolloniensis* Koufos, Kostopoulos et Sylvestrou with *E. (Sussemionus) wuesti*, *E. (Sussemionus) granatensis*, and *E. (Sussemionus) hipparionoides*.

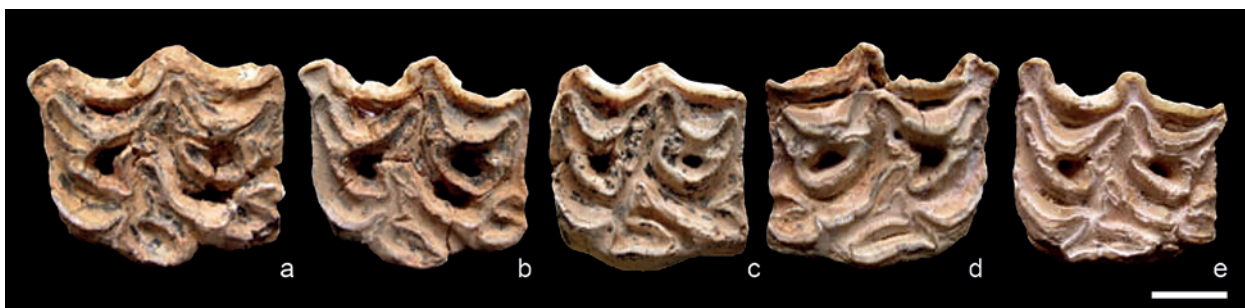


**Fig. 15** *Equus cf. apolloniensis*, Denizli. – Left P<sup>2</sup>-M<sup>3</sup> DA-1, occlusal view. – Scale: 30 mm.

*Equus cf. apolloniensis* seems also be represented in the Denizli Basin (Aegean region, southwestern Turkey). Two upper cheek teeth series show deep post-protoconal grooves and bilobated protocones, like in *E. apolloniensis* (Fig. 15). The size of the teeth and the length of the protocone (Fig. 9) fit well with *E. apolloniensis* (Boulbes et al. 2014). New dating based on cosmogenic nuclides (<sup>26</sup>Al/<sup>10</sup>Be) of conglomerate levels framing the upper fossiliferous travertine unit constrains its deposition between 1.1 and 1.6 Ma BP (Lebatard et al. 2014).

#### 4.2. Le Vallonnet and La Tour Grimaldi

The large mammals of Vallonnet (Roquebrune-Cap-Martin, Alpes-Maritimes, France) cave were found inside a level contemporary of Jaramillo event (de Lumley et al. 2009). This age agrees with absolute dating of the stalagmitic floors by the ESR method range between 0.91 and 1.37 Ma BP (Yokoyama et al. 1988). New dating by uranium-lead (U-Pb) method, coupled with palaeomagnetic constraints, wide the age range from 1.2 to 1.1 Ma BP (Michel et al. 2017). Equid fossils are few: several teeth and very rare postcranial elements. The teeth found at Vallonnet were referred to *Equus stenorionis* sensu lato (Moullé et al. 2006; Moullé 2012). The upper cheek teeth however resemble Sussemione (Boulbes, unpublished data). Fossettes are plicated, the pli caballin is well developed and sometimes double. On the premolars corresponding to the same individual, the protocone is short, oval and oblique like in the new maxillary of *E. (Sussemionus) wuesti* from Untermassfeld (Fig. 16a–b). The upper teeth of the equid from Le Vallonnet (Fig. 16) are, however, much larger than those of *E. wuesti* (Fig. 9). Two other teeth, in particular a M<sup>2</sup> have more elongated protocones (Fig. 16d–e). In lower cheek teeth the pattern of the double knot is stenonine (Fig. 17). The ectoflexid (vestibular groove) penetrates the isthmus on the molar (Fig. 17c) but stay away from the lingual groove. A pli protostylid is present at the occlusal level on the worn premolars (Fig. 17a–b) and well developed at mid-level of



**Fig. 16** Le Vallonnet. – a Left P<sup>3</sup> A9.AJ54, occlusal view. – b Left P<sup>4</sup> A9.AJ5.95, occlusal view. – c Left M<sup>1</sup> B9.BJ16.953, occlusal view. – d Right P<sup>4</sup> B6.C.3237, occlusal view. – e Left M<sup>2</sup> B7.288, occlusal view. – Scale: 10 mm.

**Fig. 17** LeVallonnet. – **a** Left P<sub>3</sub> A6.AG13.8214, occlusal view. – **b** Left P<sub>4</sub> G9.20034, occlusal view. – **c** Left M<sub>2</sub> G9.20033, occlusal view. – Scale: 10mm.



the crown on the molar. The presence of these plis together with the pattern of the upper left premolars (Fig. 16a–b) strongly suggest that they represent a *Sussemine*.

Scarce equid remains come from the site of La Tour de Grimaldi (Liguria, Italy) near Le Vallonnet. Geological and paleontological correlations with Vallonnet cave suggest that the site is about the same age (de Lumley 1969; Moullé 1996; Lacomat and Moullé 2005).

An upper premolar has a deep post-protoconal groove and a bilobated protocone like in *E. apolloniensis* (Fig. 18a) but seems too small for this species. The lower P<sub>4</sub> (Fig. 18b) has an asymmetrical double knot: rounded metaconid and pointed or triangular metastylid with an isthmus between them. The pli protostylid is well developed at mid-level of the crown. This lower premolar looks like the ones from Vallonnet.

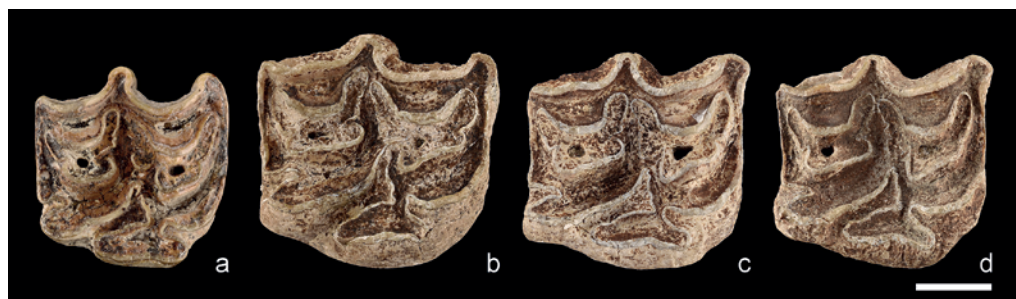
**Fig. 18** Tour Grimaldi. – **a** Right P<sub>4</sub> 13692, occlusal view. – **b** Left P<sub>4</sub> 13680, occlusal view. – Scale: 10mm.



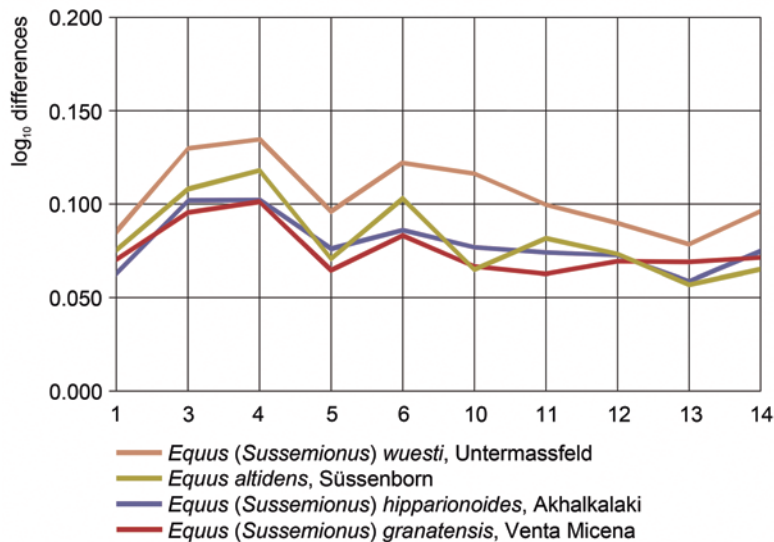
## 5. Comparisons with finds from other localities

### 5.1. Süssenborn

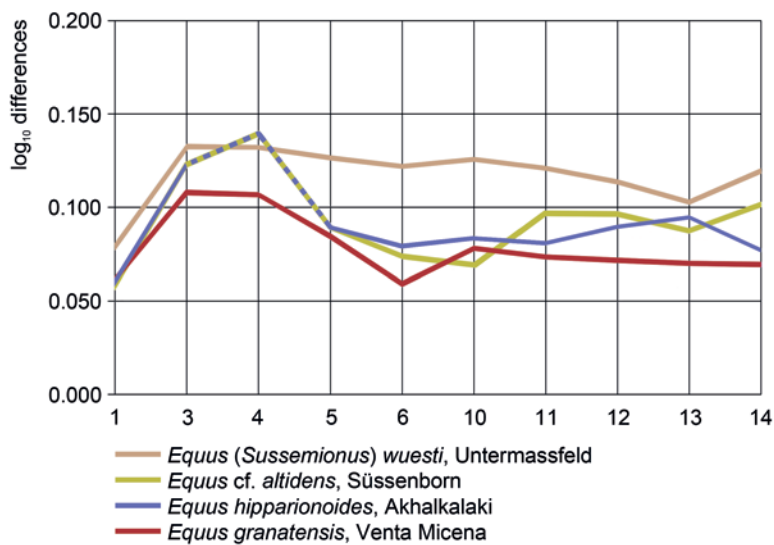
The fluviatile horizons of the site of Süssenborn (Thuringia, Central Germany) represent a long time interval within the early Brunhes magnetochron and could be associated to MIS 16 (Kahlke et al. 2011). The large and micromammal fauna includes characteristic early Middle Pleistocene elements.



**Fig. 19** *Equus altidens* von Reichenau, syntype, Süssenborn. – **a** Right M<sup>1</sup> IQW 1964/1 199 (SüB. 4 433), occlusal view. | *Equus marxi* von Reichenau, holotype, Süssenborn. – **b** Right P<sup>4</sup> IQW H.G. SüB. 1365, occlusal view. – **c** Right M<sup>2</sup> IQW H.G. SüB. 1367, occlusal view. – **d** Left (mirrored) M<sup>1</sup> IQW H.G. SüB. 1366, occlusal view. – Scale: 10 mm.



**Fig. 20** Log<sub>10</sub> differences of Mc III characters 1–14 (explanation of numbers see Table 4) between extant *Equus hemionus* Pallas as reference, *E. (Sussemionus) wuesti*, *E. altidens*, *E. (Sussemionus) hipparionoides* and *E. (Sussemionus) granatensis*.



**Fig. 21** Log<sub>10</sub> differences of Mt III characters 1–14 (explanation of numbers see Table 5) between extant *Equus hemionus* Pallas as reference, *E. altidens*, *E. (Sussemionus) hipparionoides* and *E. (Sussemionus) granatensis*.

Many European fossils have been compared with, or referred to, *E. cf. altidens* or *E. altidens* – a species first described from Süssenborn. But in spite of their number and historic importance the Süssenborn equids are still poorly known and understood, especially *E. altidens* and *E. marxi*.

The type upper molar of *E. altidens* is smaller than the teeth of the type of *E. marxi* (Fig. 19). The protocone is medium-sized, the postprotoconal groove is not deep, there is no pli caballin. Some of the small lower teeth from Süssenborn [illustrated in Eisenmann (2008) as belonging to *Equus* sp.] may be referred to *E. altidens*; their pattern is stenonine. Neither upper nor lower are characteristic of Sussemiones.

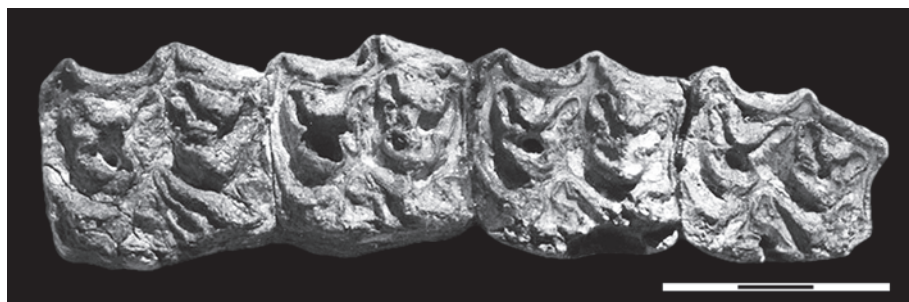
The only resemblances of *E. altidens* to Sussemiones are provided by one metacarpal (Fig. 20) and one metatarsal (Fig. 21).



**Fig. 22** *Equus marxi* von Reichenau, paratypes, Süssenborn. – **a** Left P<sub>1</sub> IQW H.G. S. 1368, occlusal view. – **b** Left P<sub>2</sub> IQW H.G. S. 1369, occlusal view. – **c** Left M<sub>2</sub> IQW H.G. S. 1370, occlusal view. – Scale: 10 mm.



**Fig. 23** *Equus* (*Sussemionus*) *hipparionoides* Vekua, Akhalkalaki. – Left P<sup>4</sup>-M<sup>3</sup> AKHA 100, occlusal view. – Scale: 30mm.



The upper cheek teeth of *E. marxi* (Fig. 19) have medium to long protocones, deep postprotoconal grooves and no pli caballin. They resemble teeth of extant *Hemionus*. The lower cheek teeth (Fig. 22) are typical for *Sussemionus*; actually, they could be easily referred to *E. (Sussemionus) suessenbornensis*.

There is no resemblance at all between *Equus (Sussemionus) wuesti* and the types of *E. altidens* and *E. marxi* neither in the upper cheek teeth pattern (Figs. 3, 19) nor in the lower ones (Figs. 4, 22).

Not a single Mt III of *Equus (Sussemionus) wuesti* from Untermassfeld resemble slender *Sussemionus* [*E. altidens*, *E. (Sussemionus) hipparionoides*, *E. (Sussemionus) granatensis*; see Figs. 5–21]. The Mc III, however, are not very different in their proportions although wider at the distal supra-articular tuberosities (Fig. 20, measurement 10).

## 5.2. Akhalkalaki

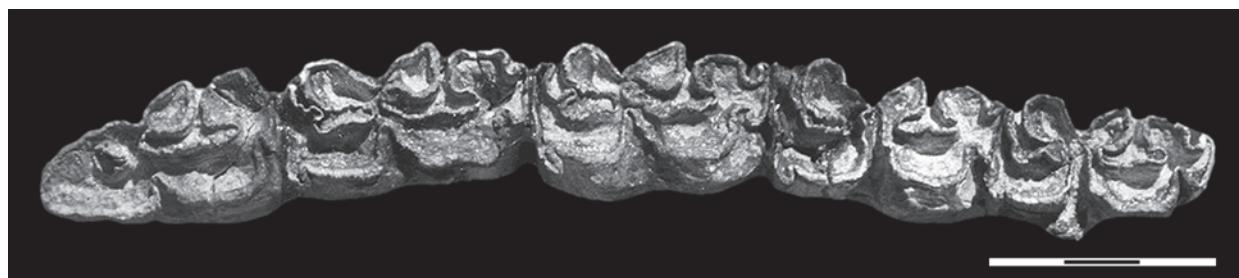
Faunal correlations and reversed paleomagnetism of Akhalkalaki (Samtskhe-Javakheti, southern Georgia) point to its belonging in the late Matuyama Chron, probably between 0.98 and 0.78 Ma BP (Tappen et al. 2002).

Together with a rich collection of *E. (Sussemionus) cf. suessenbornensis* bones were found a few remains of another and new species: *E. (Sussemionus) hipparionoides* (Vekua 1962; 1986). The upper cheek teeth are typical for a small *Sussemionus* (Fig. 23). So are the lower ones (Fig. 24).

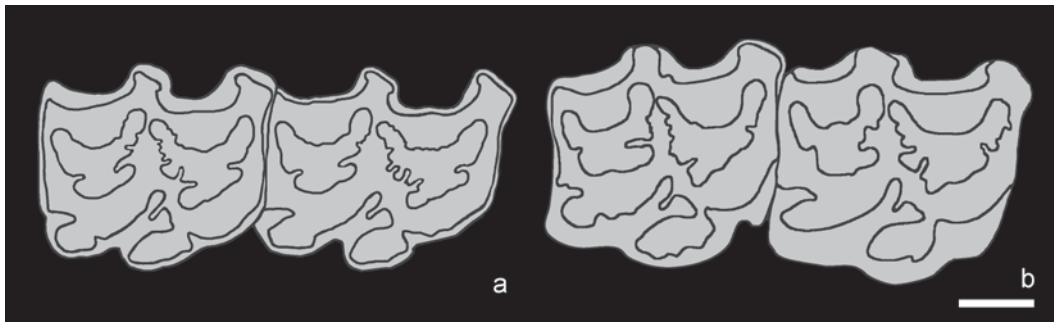
The Mc III (Fig. 17) and one Mt III (Fig. 18) resemble those referred to *E. altidens*.

## 5.3. Venta Micena

The combined uranium series-electron spin resonance (US-ESR) dating obtained for the site of Venta Micena (Granada, Guadix-Baza Basin, southeastern Spain) yielded an age about 1.4 Ma BP (Duval et al. 2011).



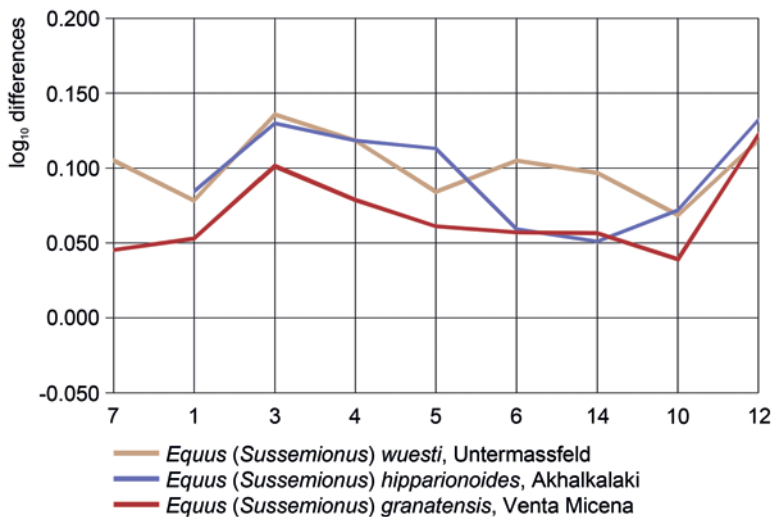
**Fig. 24** *Equus (Sussemionus) hipparionoides* Vekua, Akhalkalaki. – Right P<sub>2</sub>-M<sub>3</sub> AKHA 9, occlusal view. – Scale: 30mm.



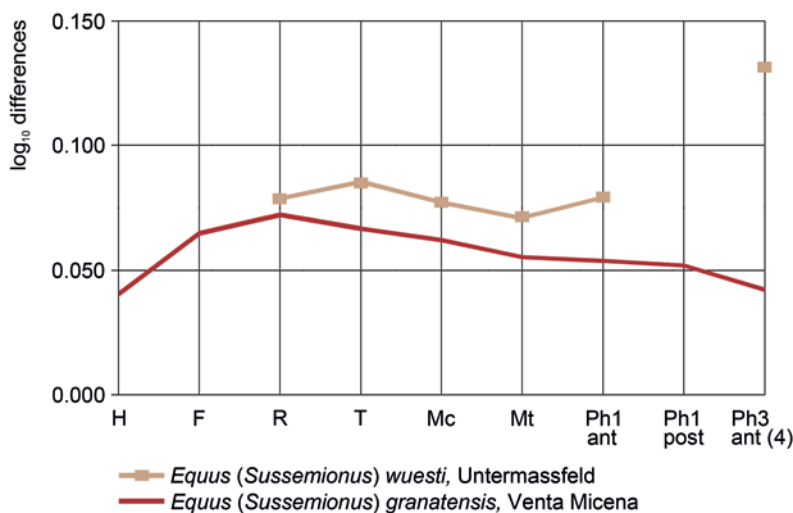
**Fig. 25** *Equus (Sussemionus) wuesti* Musil, Untermassfeld. – **a** Right P<sup>3</sup>-P<sup>4</sup> IQW 2010/31393 (Mei. 30555), occlusal view. | *Equus (Sussemionus) granatensis* (Marin), Venta Micena. – **b** Right P<sup>3</sup>-P<sup>4</sup> VM 117–2311, occlusal view. – Scale: 10mm.

As can be seen on **Fig. 25**, the resemblance of upper cheek teeth between *E. (Sussemionus) wuesti* and *E. (Sussemionus) granatensis* (Eisenmann 1999; 2006) of Venta Micena is striking.

We have already noted that the few *E. (Sussemionus) wuesti* lower cheek teeth from Untermassfeld do not show any of the peculiarities often found in Sussemiones (Eisenmann 2006) but that these peculiarities are not constant and their lack is not very significant.



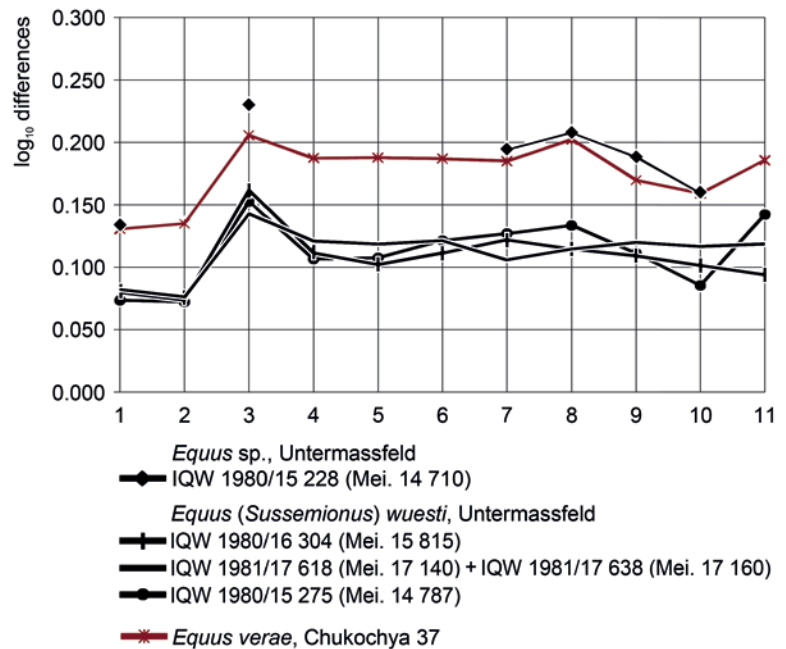
**Fig. 26** Log<sub>10</sub> differences of Ph1 ant characters (explanation of numbers see **Table 4**) between extant *Equus hemionus* Pallas as reference, *E. (Sussemionus) wuesti*, *E. (Sussemionus) hipparionoides* and *E. (Sussemionus) granatensis*.



**Fig. 27** Log<sub>10</sub> differences of limb bone lengths between extant *Equus hemionus* Pallas as reference, *Equus (Sussemionus) wuesti* Musil and *Equus (Sussemionus) granatensis* Marin. Humerus (H), femur (F), radius (R), tibia (T), metacarpus (Mc), metatarsus (Mt), anterior phalanx 1 (Ph1 ant), posterior phalanx 1 (Ph1 post), maximal breadth of anterior phalanx 3 [Ph3 ant (4)].



**Fig. 28** *Equus* sp., Untermassfeld. – **a** Right radius IQW 1980/15228 (Mei. 14710), posterior view. | *Equus wuesti* Musil, Untermassfeld. – **b** Right radius IQW 1980/15275 (Mei. 14787), posterior view. – Scale: 30mm.



**Fig. 29** Log differences of the radius characters (explanation of numbers see Table 6) between extant *Equus hemionus* Pallas as reference, *E. (Sussemionus) wuesti*, *Equus* sp. from Untermassfeld, and *E. (Sussemionus) verae* Sher from Chukochya 37, NE Siberia.

Palaeomag.	Ma	Spain	France	Italy	Greece	Germany	Turkey	Russia
Brunhes	0.4							
	0.5							
Jaramillo	0.6					Süssenborn		
	0.7							
Matuyama	0.8							Chukochya 37
	0.9							Akhalkalaki
Olduvai	1.0		Vallonnet	Grimaldi	Platanochori Apollonia	Untermassfeld		
	1.1						Denizli	
	1.2							
	1.3		Sainzelles					
	1.4	Venta Micena						
	1.5							
	1.6			Pirro Nord				
	1.7							
	1.8							
	1.9							

**Fig. 30** Approximate chronology of some localities mentioned in the text.

The Mc III (Fig. 20) and Mt III (Fig. 21) have similar proportions although quite smaller. The first anterior phalanges are quite different (Fig. 26). The Untermassfeld limb bone lengths are larger than in *E. (Sussemionus) granatensis* of Venta Micena, and the width the third anterior phalanx is much wider but other proportions are similar (Fig. 27).

#### 5.4. Further sites from Spain, France and Italy

In Spain several Early and Middle Pleistocene localities yielded equids mostly referred to *Equus altidens* and/or *Equus (Sussemionus) suessenbornensis* (Madurell-Malapeira et al. 2014). In the timing of the deposit of Untermassfeld, i. e., at around 1.0 Ma BP, the two species are in particular present in Cueva Victoria (Murcia, Spain) (Alberdi and Piñero 2014). *Equus altidens* is also well represented in the Epivillafranchian levels of Vallparadis (Barcelona, Spain) (Aurell-Garrido et al. 2010).

In France, *E. altidens* may be present at Sainzelles (Haute-Loire, France). In the South of France the new locality of Bois de Riquet (Hérault, France) yielded numerous remains of equids under study. According to Bourguignon et al. (2016) these also share affinities with *E. altidens*/*E. marxi* and *E. (Sussemionus) suessenbornensis*.

In Italy De Giuli et al. (1986) and Alberdi and Palombo (2013) referred in particular the slender equid of Pirro Nord (Puglia, Italy) to *E. altidens*.

## 6. *Equus* sp. from Untermassfeld

A fragmentary radius IQW 1980/15 228 (Mei. 14.710) is quite larger than those referred to *E. (Sussemionus) wuesti* from Untermassfeld (Figs. 28a, 29). As far as can be seen, its proportions are close to that of *E. (Sussemionus) verae* (Fig. 29) from Chukochya locality 37 (Nizhnekolymiskij district, NE Siberia) (Sher 1971; 1987) believed to be the same age as Akhalkalaki. Teeth from locality 37 are remarkably similar to those of *E. (Sussemionus) cf. suessenbornensis* of Akhalkalaki.

## 7. Conclusions

From the comparisons above, it seems that the best represented and smaller equid of Untermassfeld shares enough teeth and skeletal characters with *E. (S.) granatensis* of Venta Micena and *E. (S.) hipparionoides* of Akhalkalaki to be considered as a new species of the Sussemione group: *E. (S.) wuesti*. It differs from *E. (S.) granatensis* and *E. (S.) hipparionoides* by its larger size and the lack of the peculiarities often found in Sussemione lower cheek teeth (Eisenmann 2006); these peculiarities however are not constant and their lack is not significant.

There are not enough data to be certain but it seems probable that the large radius belonged to the same *Sussemionus* group but to the large sized species of Süssenborn, Akhalkalaki, and NE Siberia. If so, at Untermassfeld as well as at Akhalkalaki, two Sussemione species of different size coexisted.

Several other late Early and Middle Pleistocene localities in western Europe yielded two equids of different size mostly referred to *Equus altidens* and *Equus suessenbornensis*, in Spain (Alberdi and Piñero 2015; Piñero and Alberdi 2015 and references therein), in Italy (Alberdi and Palombo 2013), in France (Lacombat 2005; Bourguignon et al. 2016) or in England (Lister et al. 2010). The simplified chronological frame of Fig. 30 (mostly from Nomade et al. 2013) shows how the discussed localities are chronologically situated in respect to Untermassfeld.

Both by its age and geographical localization, *E. (S.) wuesti* fits perfectly inside the range of Sussemiones and represents an important link between the older and western Venta Micena and the younger and eastern Akhalkalaki.

As already mentioned, many European fossils have been compared with, or referred to, *E. cf. altidens* or *E. altidens* – a species described from Süssenborn. But in spite of their number and historic importance the Süssenborn equids are still poorly known and understood, especially *E. altidens*. It seems better to be careful to refer any fossil to this species nor to *E. marxi*, another poorly defined species of Süssenborn. In the course of this study, many affinities were found between *Equus apolloniensis* Koufos, Kostopoulos et Sylvestrou 1997 from the Greek locality of Apollonia and extant wild Ass *Equus africanus*. This species could represent a step within the lineage of asses soon after its differentiation.

## Acknowledgements

The authors are grateful to G. Koufos (Thessaloniki) for the communication of his personal data on teeth measurements of the equid from Apollonia, to R.-D. Kahlke, the coordinator of the Untermassfeld project, for providing the material and valuable discussions and to L.C. Maul (both Weimar) for his support.

## References

- Alberdi, M.T., Palombo, M.R., 2013. The late Early to early Middle Pleistocene stenonoid horses from Italy. *Quaternary International* 288, 25–44.
- Alberdi, M.T., Piñero, P., 2015. Estudio de los caballos del yacimiento de Cueva Victoria, Pleistoceno inferior (Murcia). In: Gibert, L., Ferràndez-Cañadell, C. (Eds.), *Geología y Paleontología de Cueva Victoria*. Cartagena, 325–358.
- Aurell-Garrido, J., Madurell-Malapeira, J., Alba, D.M., Moyà-Solà, S., 2010. The stenonian and caballoid equids from the Pleistocene section of Vallparadís (Terrassa, Catalonia, Spain). *Cidaris* 30, 61–66.
- Boulbes, N., Mayda, S., Titov, V.V., Alçiçek, M.C., 2014. Les grands mammifères du Villafranchien supérieur des travertins du Bassin de Denizli (Sud-Ouest Anatolie, Turquie). *L'Anthropologie* 118, 44–73.
- Bourguignon, L., Crochet, J.-Y., Capdevila, R., Ivorra, J., Antoine, P.-O., Agustí, J., Barsky, D., Blain, H.-A., Boulbes, N., Bruxelles, L., Claude, J., Cochard, D., Filoux, A., Firmat, C., Lozano-Fernández, I., Magniez, P., Pelletier, M., Rios-Garaizar, J., Testu, A., Valensi, P., De Weyer, L., 2016. Bois-de-Riquet (Lézignan-la-Cèbe, Hérault): A late Early Pleistocene archeological occurrence in southern France. *Quaternary International* 393, 24–40.
- De Giuli, C., Masini, F., Torre, D., 1986. The latest Villafranchian Faunas in Italy: the Pirro Nord Fauna (Apricena, Gargano). *Palaeontographia Italica* 74, 51–62.
- de Lumley, H., 1969. Le Paléolithique inférieur et moyen du Midi Méditerranéen dans son cadre géologique. Vol. 1: Ligurie – Provence. Supplément à Gallia Préhistoire 5. Paris, 1–468.
- de Lumley, H., Barsky, D., Cauche, D., 2009. Les premières étapes de la Colonisation de l'Europe et l'arrivée de l'Homme sur les Rives de la Méditerranée. In : Les premiers habitants de l'Europe (15<sup>th</sup> Congress of the International Union of Prehistoric and Protohistoric Sciences, Session C13, Lisbonne 2006). *L'Anthropologie* 113, 1–46.
- Duval, M., Falguères, C., Bahain, J.J., Grün, R., Shao, Q., Aubert, M., Hellstrom, J., Dolo, J.M., Agustí, J., Martínez-Navarro, B., Palmqvist, P., Toro-Moyano, I., 2011. The challenge of dating Early Pleistocene fossil teeth by the combined uranium series-electron spin resonance method: the Venta Micena palaeontological site (Orce, Spain). *Journal of Quaternary Science* 26, 603–615.
- Eisenmann, V., 1999. *Equus granatensis* of Venta Micena and evidence for primitive non-stenonid horses in the Lower Pleistocene. In: Gibert J., Sanchez F., Gibert L., Ribot F. (Eds.), *The hominids and their environment during the Lower and Middle Pleistocene of Eurasia*. Proceedings of the International Conference of Human Palaeontology, Orce 1995. 175–189.
2006. Pliocene and Pleistocene Equids: Palaeontology versus molecular biology. In: Kahlke, R. -D., Maul, L.C., Mazza, P.P.A. (Eds.), *Late Neogene and Quaternary biodiversity and evolution: Regional developments and interregional correlations*. Proceedings of the 18th International Senckenberg Conference (VI International Palaeontological Colloquium in Weimar). Volume I. Courier Forschungsinstitut Senckenberg 256, 71–89.
2008. Süssenborn [Online] Available: <https://vera-eisenmann.com/spip.php?page=recherche&recherche=Suessenborn&lang=en> [Accessed 23 June 2020]
2009. System of measurement for *Equus* bones and teeth (English) [Online] Available: <https://vera-eisenmann.com/system-of-measurements-for-equus-bones-and-teeth-english-?lang=en> [Accessed 23 June 2020]
2010. *Sussemionus*, a new subgenus of *Equus* (Perissodactyla, Mammalia). *Comptes Rendus Biologies* 333, 235–240.
- Eisenmann, V., Vasiliev, S., 2011. Unexpected finding of a new *Equus* species (Mammalia, Perissodactyla) belonging to a supposedly extinct subgenus in late Pleistocene deposits of Khakassia (southwestern Siberia). *Geodiversitas* 33, 519–530.
- Ellenberg, J., Kahlke, R.-D., 1997. Die quartärgeologische Entwicklung des mittleren Werratal und der Bau der unterpleistozänen Komplexfundstelle Untermassfeld. In: Kahlke, R.-D. (Ed.), *Das Pleistozän von Untermassfeld bei Meiningen (Thüringen)*. Teil 1. Monographien des Römisch-Germanischen Zentralmuseums 40, 1, 29–62, pls. 1–18.
- Kahlke, R.-D., 2000. The Early Pleistocene (Epivillafranchian) Faunal Site of Untermassfeld (Thuringia, Central Germany): Synthesis of New Results. In: Lordkipanidze, D., Bar-Yosef, O., Otte, M. (Eds.), *Early Humans at the Gates of Europe*. Proceedings of the first International symposium Dmanisi, Tbilisi (Georgia), Septembre 1998. *Etudes et Recherches Archéologiques de l'Université Liège* 92, 123–138.
2006. Untermassfeld. A late Early Pleistocene (Epivillafranchian) fossil site near Meiningen (Thuringia, Germany) and its position in the development of the European mammal fauna. *British Archaeological Reports, International Series* 1578. Oxford.
- in this volume. Excavation progress and research at the Early Pleistocene site of Untermassfeld during the years 1997–2015. 1031–1078.
- Kahlke, R.-D., Gaudzinski, S., 2005. The blessing of a great flood: differentiation of mortality patterns in the large mammal record of the Lower Pleistocene fluvial site of Untermassfeld (Germany) and its relevance for the interpretation of faunal assemblages from archaeological sites. *Journal of Archaeological Science* 32, 1202–1222.
- Kahlke, R.-D., Garcia N., Kostopoulos, D.S., Lacombat, F., Lister, A.M., Mazza, P.P.A., Spassov, N., Titov, V.V., 2011. Western Palearctic palaeoenvironmental conditions during the Early and early Middle Pleistocene inferred from large mammal faunal communities, and implications for hominin dispersal in Europe. *Quaternary Science Review* 30, 1368–1395.
- Konidaris, G.E., Tourloukis, V., Kostopoulos, D.S., Thompson, N., Giusti, D., Michailidis, D., Koufos, G.D., Harvati, K., 2015. Two new vertebrate localities from the Early Pleistocene of Mygdonia Basin (Macedonia, Greece): Preliminary results. *Comptes Rendus Palevol* 14, 353–362.
- Koufos, G.D., Kostopoulos, D.S., Sylvestrou, I.A., 1997. *Equus apolloniensis* n. sp. (Mammalia, Equidae) from the latest Villafranchian locality of Apollonia, Macedonia. Greece. *Paleontologia i Evolucio* 30–31, 49–76.
- Lacombat, F., 2005. Les grands mammifères fossiles du Velay. Les collections paléontologiques du Plio-Pléistocène du Musée Crozatier, Le Puy-en-Velay. *Annales des amis du Musée Crozatier* 13–14 (2004–2005), 13–14.

- Lacombat, F., Moullé, P.-E., 2005. Description paléontologique du *Stephanorhinus hundsheimensis* (Toula, 1902) Pléistocène Inférieur de la Tour de Grimaldi (Ligurie, Italie). *Bulletin du Musée d'Anthropologie Préhistorique de Monaco* 44, 33–38.
- Lebatard, A.-E., Alçiçek, M.C., Rochette, P., Khatib, S., Vialet, A., Boulbes, N., Bourlès, D.L., Demory, F., Guipert, G., Mayda, S., Titov, V.V., Vidal, L., de Lumley, H., 2014. Dating the *Homo erectus* bearing travertine from Kocabaş (Denizli, Turkey) at at least 1.1 Ma. *Earth and Planetary Science Letters* 390, 8–18.
- Lister, A.M., Parfitt, S.A., Owen, F.J., Collinge, S.E., Breda, M., 2010. Metric analysis of ungulate mammals in the early Middle Pleistocene of Britain, in relation to taxonomy and biostratigraphy II Cervidae, Equidae and Suidae. *Quaternary International* 228, 157–179.
- Madurell-Malapeira, J., Ros-Montoya, S., Espigares, M.P., Alba, D.M., Aurell-Garrido, J., 2014. Villafranchian large mammals from the Iberian Peninsula: paleobiogeography, paleoecology and dispersal events. *Journal of Iberian Geology* 40, 167–178.
- Michel, V., Shen, C.C., Woodhead, J., Hu, H.M., Chung-Che, Wu, Moullé, P.E., Khatib, S., Cauche, D., Moncel, M.H., Valensi, P., Chou, Y.M., Gallet, S., Echassoux, A., Orange, F., de Lumley, H., 2017. New dating evidence of the early presence of hominins in Southern Europe. *Scientific Reports* 7, 10074.
- Moullé, P.-E., 1996. Paléontologie des grands mammifères de la grotte du Vallonet (Roquebrune-Cap-Martin, Alpes-Maritimes, France). Comparaison avec la faune de la Tour de Grimaldi (Vintimille, Italie). In: *Proceedings of the 13<sup>th</sup> Congress of the International Union of Prehistoric and Protohistoric Sciences*, 8–14 September 1996, Forlì. 447–454.
2012. La faune de grands mammifères de la grotte du Vallonet (Roquebrune-Cap-Martin, Alpes-Maritimes, France). Situation dans la seconde moitié du Pléistocène inférieur récent (Épivillafranchien). *Bulletin du Musée d'Anthropologie Préhistorique de Monaco* 52, 29–34.
- Moullé, P.-E., Lacombat, F., Echassoux, A., 2006. Apport des grands mammifères de la grotte du Vallonet (Roquebrune-Cap-Martin, Alpes-Maritimes, France) à la connaissance du cadre biochronologique de la seconde moitié du Pléistocène inférieur d'Europe. *L'Anthropologie* 110, 837–849.
- Musil, R., 2001. Die Equiden-Reste aus dem Unterpleistozän von Untermaßfeld. In: Kahlke, R.-D. (Ed.), *Das Pleistozän von Untermaßfeld bei Meiningen (Thüringen)*. Teil 2. Monographien des Römisch-Germanischen Zentralmuseums 40, 2, 557–587, pls. 92–94.
- Nomade, S., Pastre, J.F., Guillou, H., Faure, M., Guérin, C., Delson, E., Debard, E., Voinchet, P., Messenger, E., 2013. <sup>40</sup>Ar/<sup>39</sup>Ar constraints on some French landmark Late Pliocene to Early Pleistocene large mammalian paleofaunas: Paleoenvironmental and paleoecological implications. *Quaternary Geochronology* 14, 2–15.
- Piñero, P., Alberdi, M.T., 2015. Estudio de los caballos del yacimiento de Quibas, Pleistoceno Inferior final (Abanilla, Murcia, España). *Estudios Geológicos* [Online] 71. Available: <http://estudiosgeol.revistas.csic.es/index.php/estudiosgeol/article/view/928/1031.html>. [Accessed 17 January 2017]
- Sher, A.V., 1971. Mlekopitayushchie i stratigrafiya pleistotsena krainego Severo-Vostoka SSSR i Severnoj Ameriki. Moskva. (in Russian)
1987. Olyorian land mammal age of Northeastern Siberia. *Palaeontographia Italica* 74, 97–112.
- Simpson, G.G., 1941. Large Pleistocene felines of North America. *American Museum Novitates* 1136, 1–27.
- Spasov, N., 2003. The Plio-Pleistocene vertebrate fauna in South-Eastern Europe and the megafaunal migratory waves from the east to Europe. *Revue de Paléobiologie* 22, 197–229.
- Tappen, M., Adler, D.S., Ferring, C.R., Gabunia, M., Vekua, A., Swisher, C.C., 2002. Akhalkalaki: The Taphonomy of An Early Pleistocene Locality in the Republic of Georgia. *Journal of Archaeological Science* 29, 1367–1391.
- Vekua, A.K., 1962. Akhalkalaks kaya nizhneplejstotsenovaya fauna mlekopitayushchikh. Tbilisi. (in Georgian, with Russian summary)
1986. The Lower Pleistocene Mammalian Fauna of Akhalkalaki (Southern Georgia, USSR). *Palaeontographia Italica* 74, 63–96.
- Yokoyama, Y., Bibron, R., Falguères, C., 1988. Datation absolue des planchers stalagmitiques de la grotte du Vallonet à Roquebrune-Cap-Martin (Alpes-Maritimes) France, par la résonance de spin électronique (ESR). *L'Anthropologie* 92, 429–436.

